



DAR AL ARKAN



DUBAI
DOWNTOWN
THE RESIDENCES

DAR AL ARKAN

ARE **YOU READY**



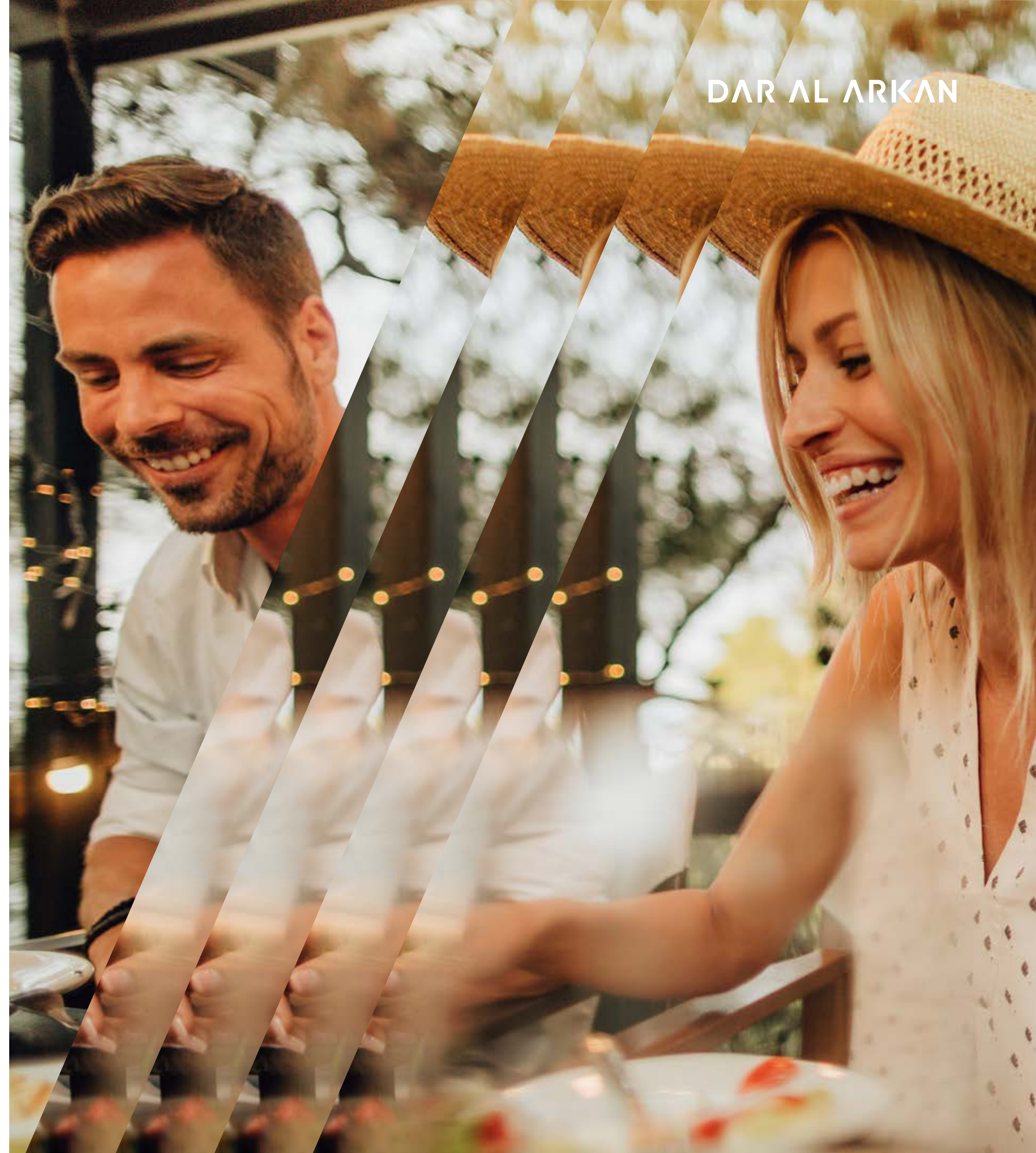
DAR AL ARKAN

TO **MULTIPLY**



**YOUR
LIVING EXPERIENCE**

DAR AL ARKAN





DAR AL ARKAN

TIMES
INFINITY?

WELCOME
TO YOUR
HOME
AT THE
W RESIDENCES
DUBAI -
DOWNTOWN

DAR AL ARKAN



DAR AL ARKAN



BOLD ATTITUDE

Born from the bold attitude and 24/7 culture of New York City, W Hotels has disrupted and redefined the hospitality scene for over two decades. Trailblazing its way around the globe, W Hotels is defying expectations and breaking the norms of traditional luxury wherever the iconic W sign lands.



DAR AL ARKAN



WHATEVER/ WHENEVER®

Disruption is at the core of W Hotels' DNA. It embodies the antithesis of the traditional, the answer to the next generation of affluent consumers. By stimulating creative collisions through Design, Music and Fashion, W Hotels sets a new standard for extraordinary hotel living.

CITIZENS OF THE WORLD

As a fluent interpreter of cultural shifts and social trends, W Hotels blends its witty personality with local flair and atmosphere, creating once-in-a-lifetime experiences for its residents and guests.





DAR AL ARKAN

SOLID GROUND

Dar Al Arkan landed the lead role in the real estate universe thanks to 27 years of accomplishments. World-class architects, top-quality materials, management and maintenance, successful collaborations have built a steady trust among the most affluent clients.

FRACTAL BEAUTY

The sophisticated architecture recalls the beat of a vibrant city that never stops, but also the perfect geometries of nature. A vertical bloom of 49 floors, made of 384 exquisitely crafted residences, that dialogues harmonically with the solid concrete base.



DAR AL ARKAN



DAR AL ARKAN

IN THE HEART OF DOWNTOWN DUBAI

W Residences Dubai – Downtown is situated in the spotlight of the city's vibrant life. The Burj Khalifa is just outside the window, the Dubai Mall and the Dancing Fountains are only a few steps away. Elegant streets, majestic buildings, chic leisure points, the most exclusive venues: it all happens here.



DAR AL ARKAN

WHERE
IT ALL
HAPPENS



LOCATION



DUBAI
DOWNTOWN
THE RESIDENCES

DUBAI CANAL

5 MINUTES
BURJ KHALIFA

4 MINUTES
THE DUBAI FOUNTAIN

3 MINUTES
THE DUBAI CANAL

6 MINUTES
THE DUBAI MALL

6 MINUTES
THE DUBAI OPERA

DUBAI OPERA

DUBAI FOUNTAIN

SOUK AL BAHAR

BURJ KHALIFA

DUBAI MALL



VERY FIRST SIGHT

Curved, floor-to-ceiling glass facades offer exceptional open views over the city, a breathtaking panorama dedicated to an exclusive elite. Not just today, but forever. Because the tower orientation is carefully planned to mitigate being blocked from facing towers in the future.



UNCONVENTIONAL. UPSCALE. UNMISSABLE.

Step in a world of rebel luxury, iconic design, sophisticated materials, tactile pleasure. The experience begins in the W Lounge, where a sophisticated and stylish atmosphere awakens your senses.

Enter one of the exclusive 384 residences and start feeling at home from the very first moment. Floor to ceiling glass facades and staggered balconies allow plenty of sunlight in every room, while accent wallpapers underline their vibrant personality.





DAR AL ARKAN



WORLD- CLASS AMENITIES

W Residences Dubai – Downtown offers superlative amenities dedicated to residents and their guests, turning every moment into a truly memorable experience.

- The Clubhouse: a VIP lounge where new connections spark in front of a signature cocktail or a gourmet lunch
- Advance fitness center
- Media Room with a private cinema, gaming room and a chill area
- Board Room offering refined meeting rooms and a co-working space
- Infinity pool overlooking Burj Khalifa
- Extensive terraces with lounge and seating areas
- Walking track through a lush landscape
- Guest Suites upon request
- “Platinum Elite” status in Marriott Bonvoy for two years





DETOX. RETOX.REPEAT.

The secret of success lies in a healthy and active lifestyle. At The Residences, residents can recharge themselves in the futuristic fitness center, where they will find the most advanced equipment and plenty of space to workout, play and meditate.

INSIDER ACCESS

Inside The Residences, residents and guests are granted the exclusive access to the Clubhouse: a VIP lounge where new connections spark in front of a signature cocktail or a gourmet lunch.





DAR AL ARKAN

SPACE FOR IDEAS

The common areas are designed to fuel relations, creativity and leisure.

In the Media Room, residents can unwind in the private cinema, the gaming room and the chill area. The Board Room offers refined meeting rooms and a co-working space, to meet any business need.

LIVE ABOVE DREAMS

Living at the top is not a metaphor here. Discover the colossal rooftop that dominates the city, the ideal place to watch the fireworks over Burj Khalifa on New Year's Eve, with a stunning 360° view of the city.

Dive into the 60 meters wide pool of the podium, enjoy a light snack and let yourself be pampered.



DAR AL ARKAN





HOMES WITH BENEFITS

Benefits of residents go beyond W Residences. The Residences owners will benefit from the "Platinum Elite" status in Marriott Bonvoy for two years, that includes Dedicated Elite support, complimentary lounge access, 10% off Best Available Rate and many more amenities in over 7400+ hotels around the globe.



FLOOR PLANS

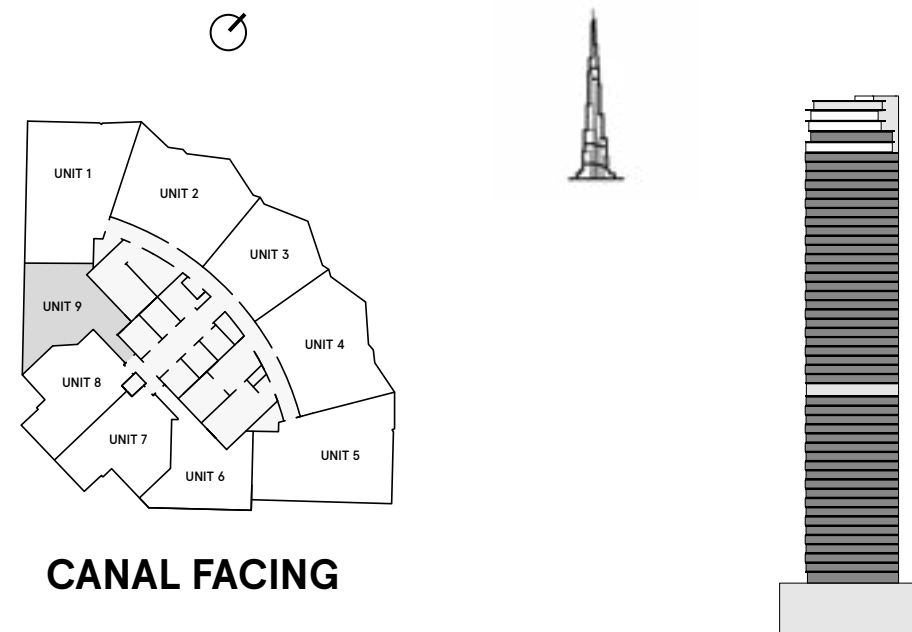


W RESIDENCES DUBAI - DOWNTOWN

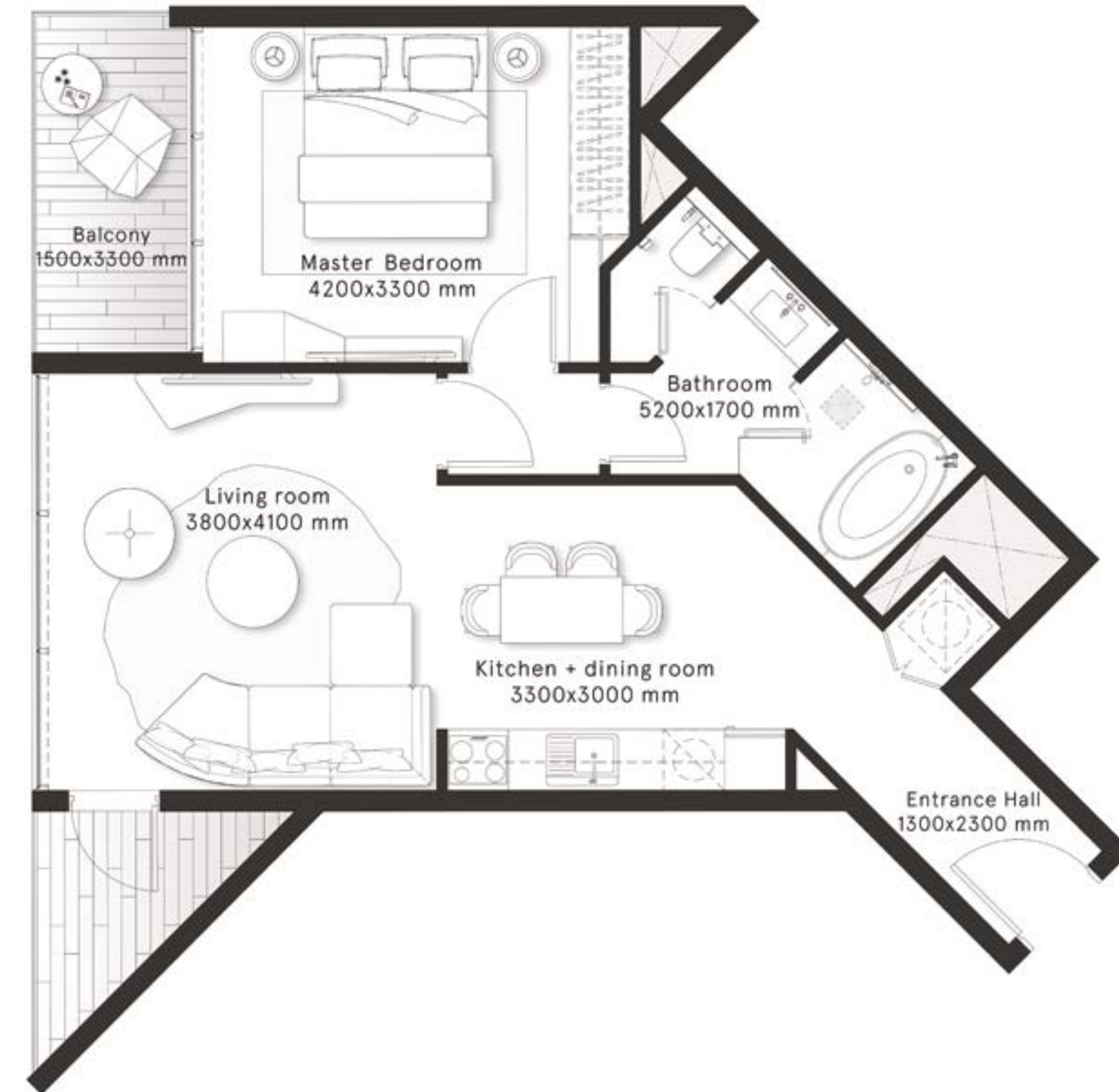
1 Bedroom Type A

FLOORS
1-46,48

CITY
VIEWS



INTERNAL AREA	656.8 sq ft
BALCONY AREA	97.7 sq ft
TOTAL AREA	754.5 sq ft

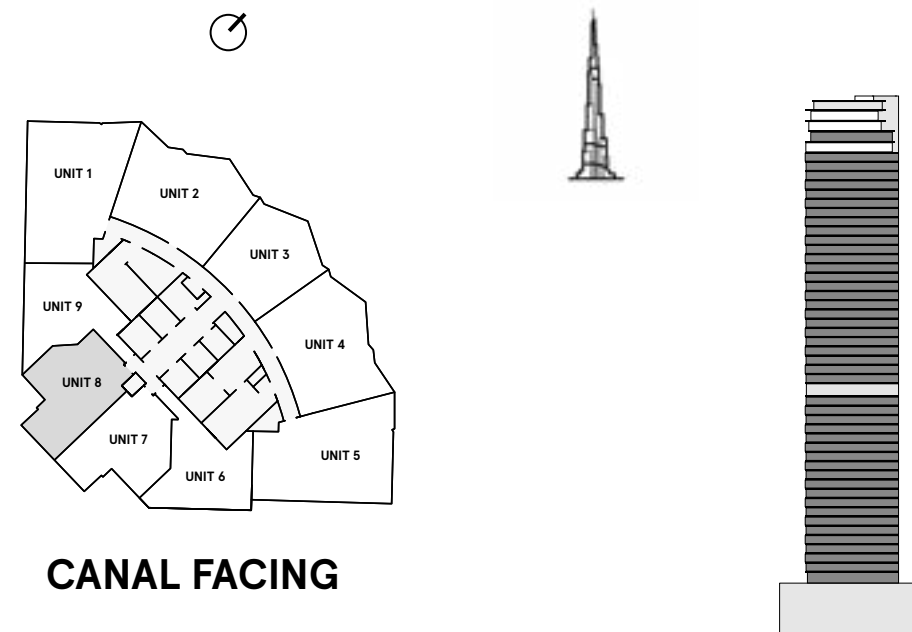


W RESIDENCES DUBAI - DOWNTOWN

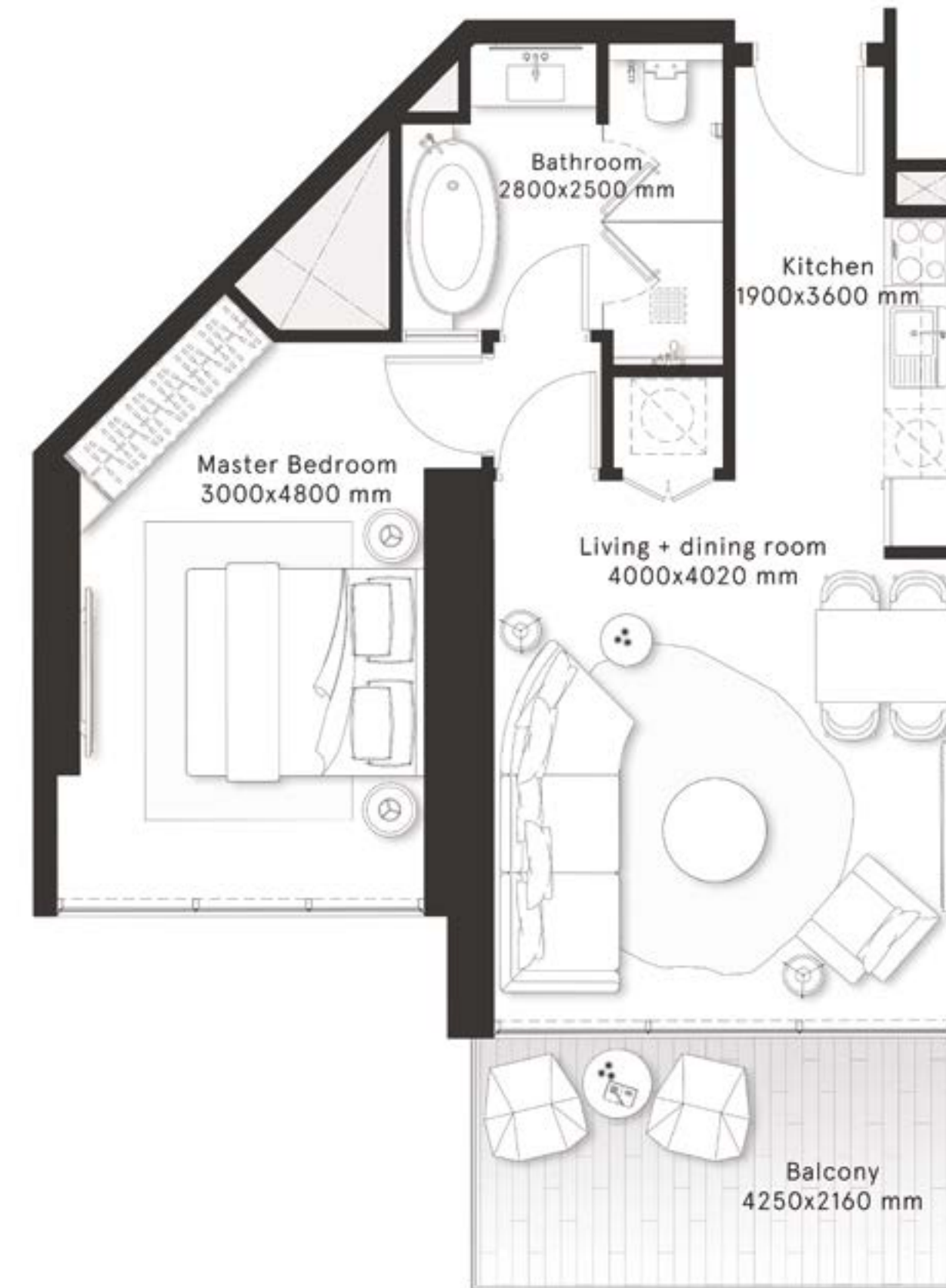
1 Bedroom Type B

FLOORS
1-46,48

CITY
VIEWS



INTERNAL AREA	603.7 sq ft
BALCONY AREA	101 sq ft
TOTAL AREA	704.7 sq ft

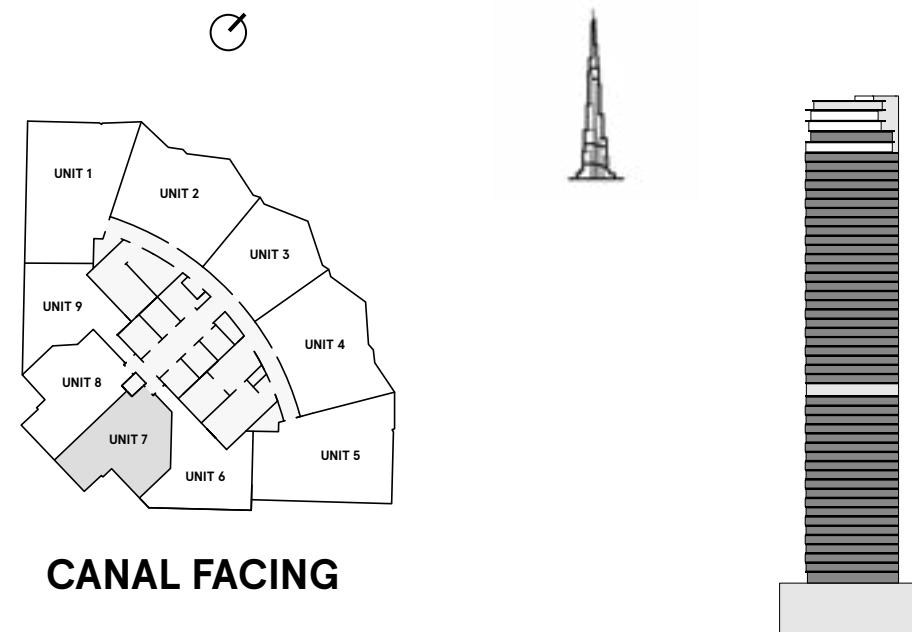


W RESIDENCES DUBAI - DOWNTOWN

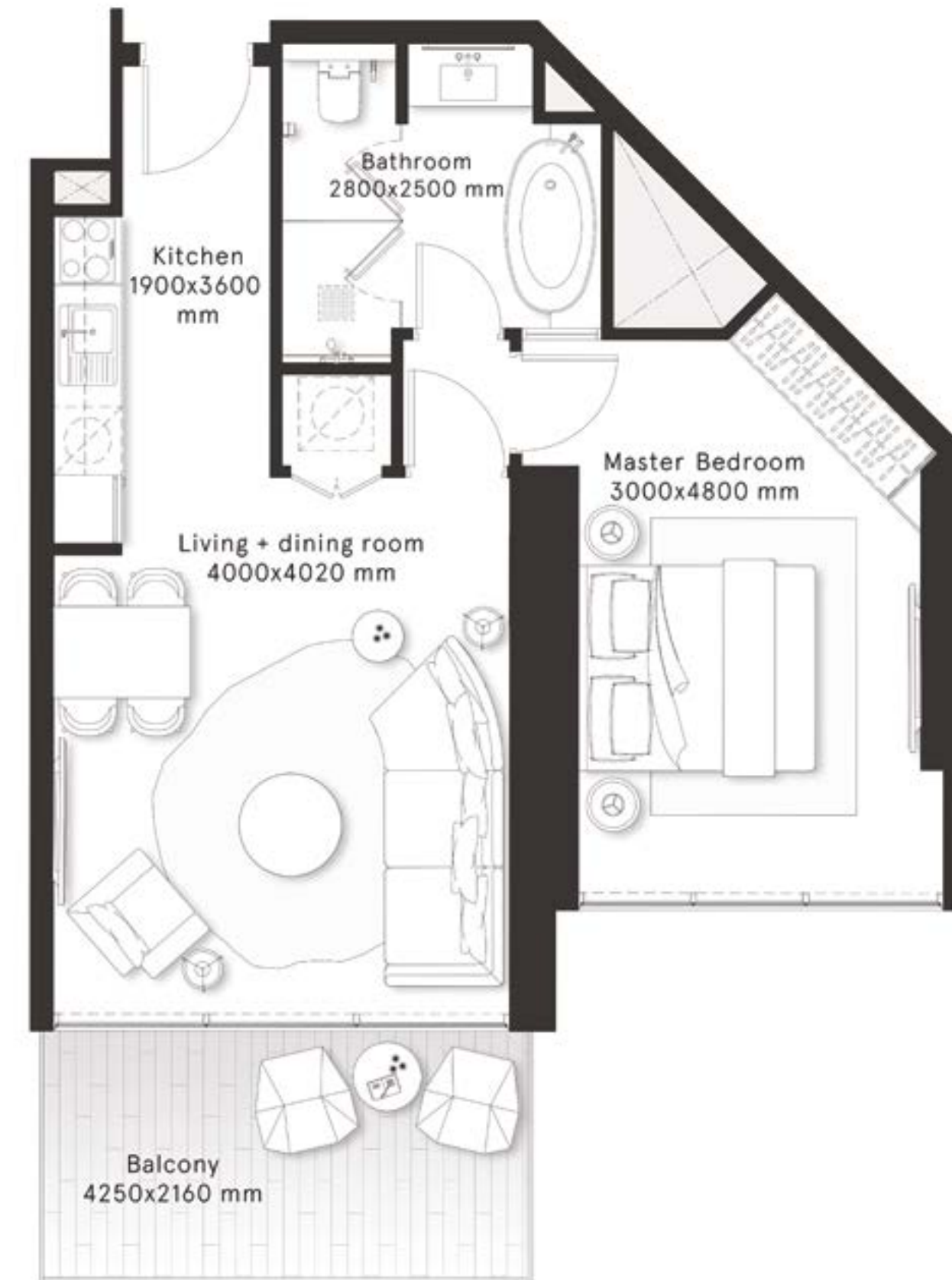
1 Bedroom Type B1

FLOORS
1-46,48

CITY
VIEWS



INTERNAL AREA	609.2 sq ft
BALCONY AREA	101 sq ft
TOTAL AREA	710.2 sq ft

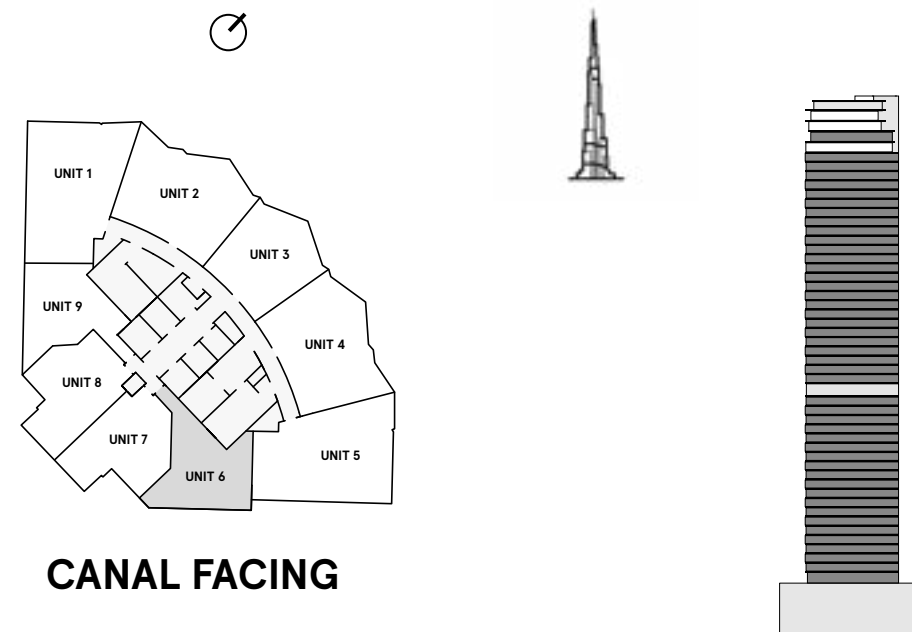


W RESIDENCES DUBAI - DOWNTOWN

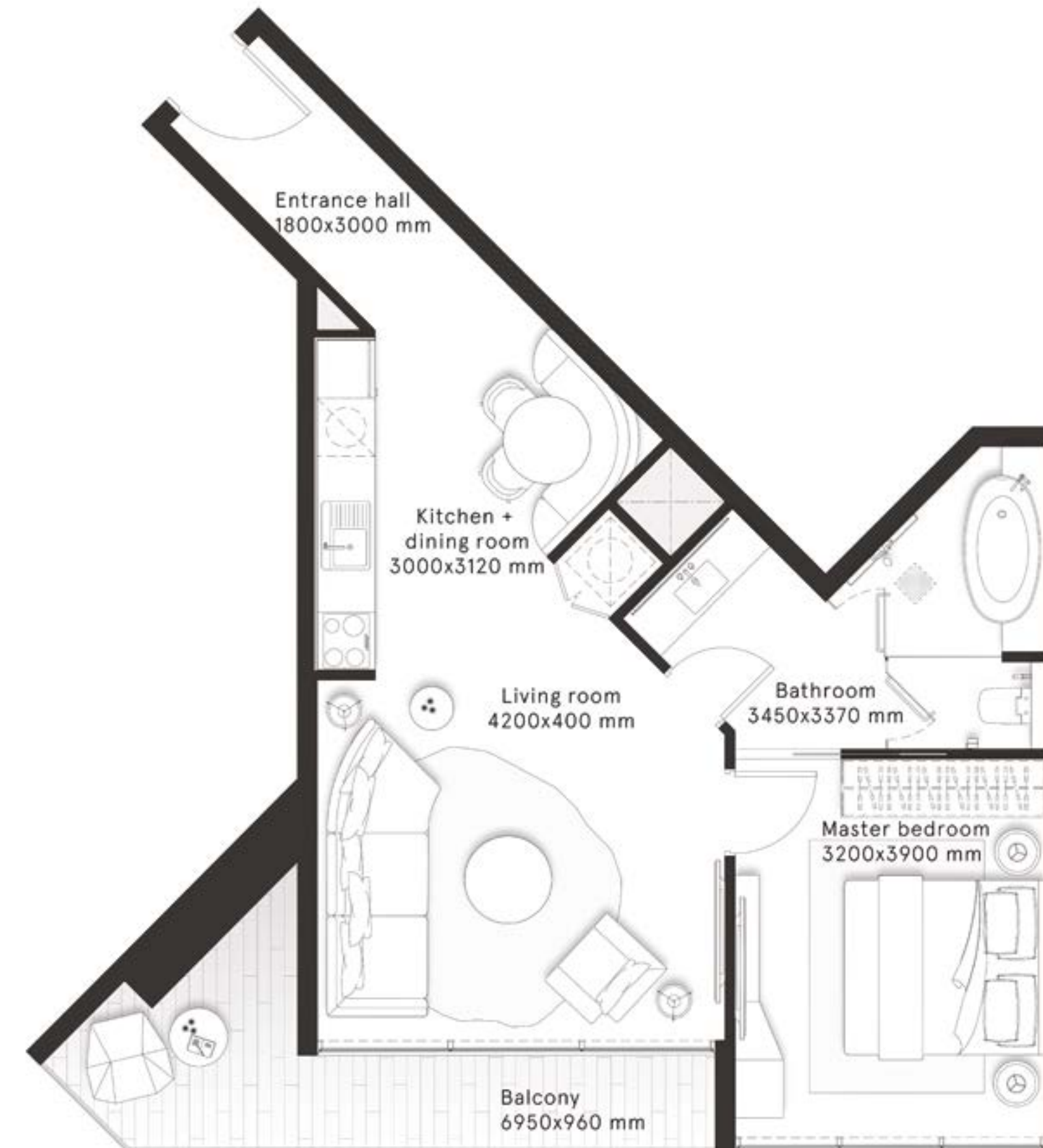
1 Bedroom Type C

FLOORS
1-46,48

CITY
VIEWS



INTERNAL AREA	646.8 sq ft
BALCONY AREA	107 sq ft
TOTAL AREA	753.8 sq ft

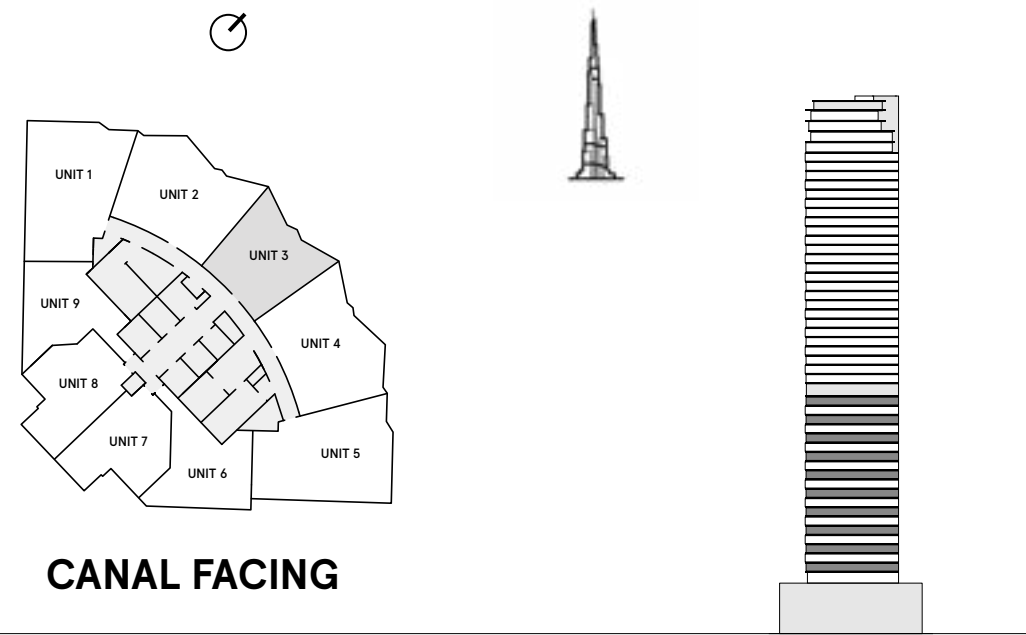


W RESIDENCES DUBAI - DOWNTOWN

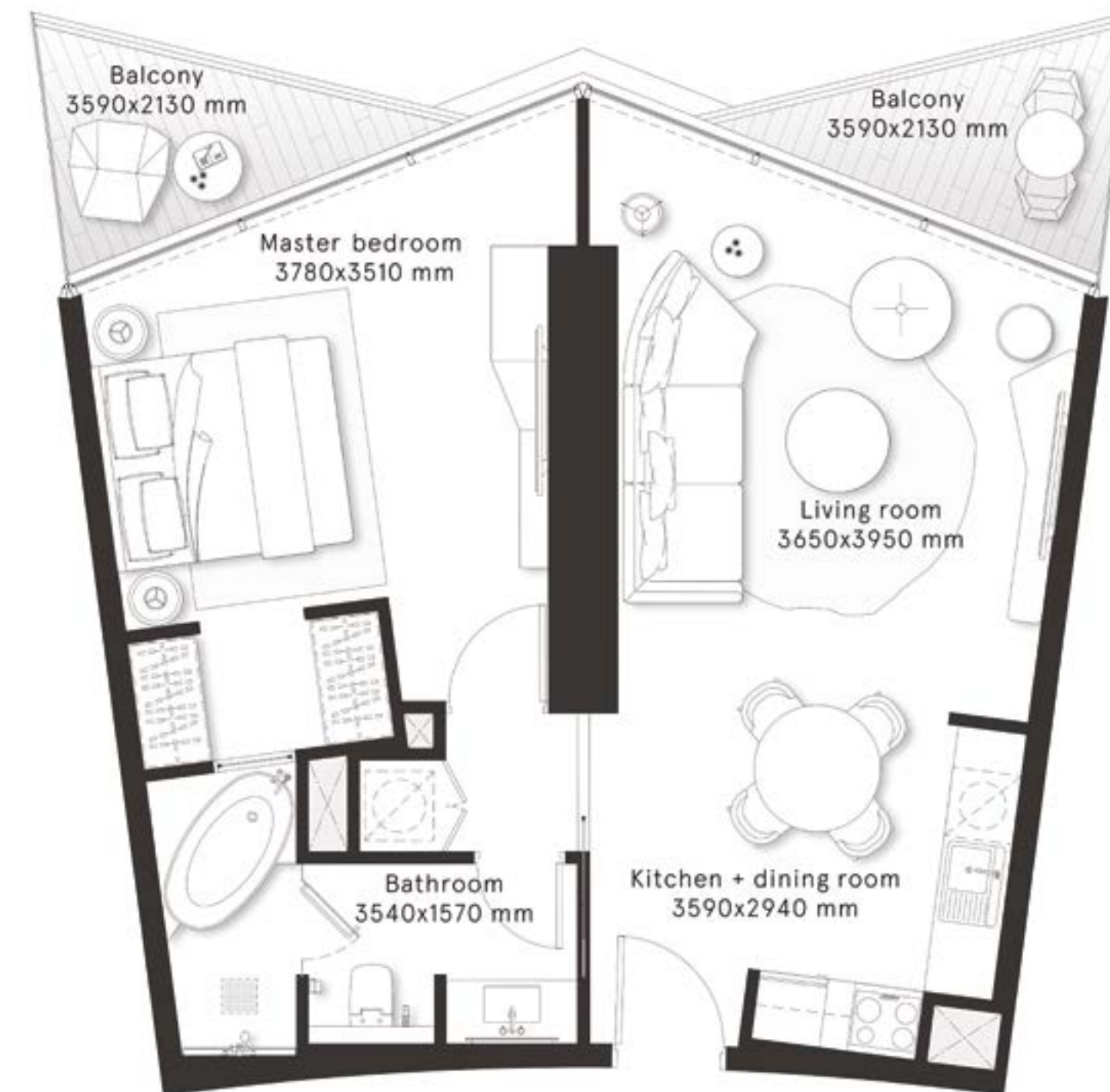
1 Bedroom Type D

FLOORS
2,4,6,8,10,12,14,16,18,20

CITY
VIEWS



INTERNAL AREA	667.8 sq ft
BALCONY AREA	102.15 sq ft
TOTAL AREA	769.95 sq ft

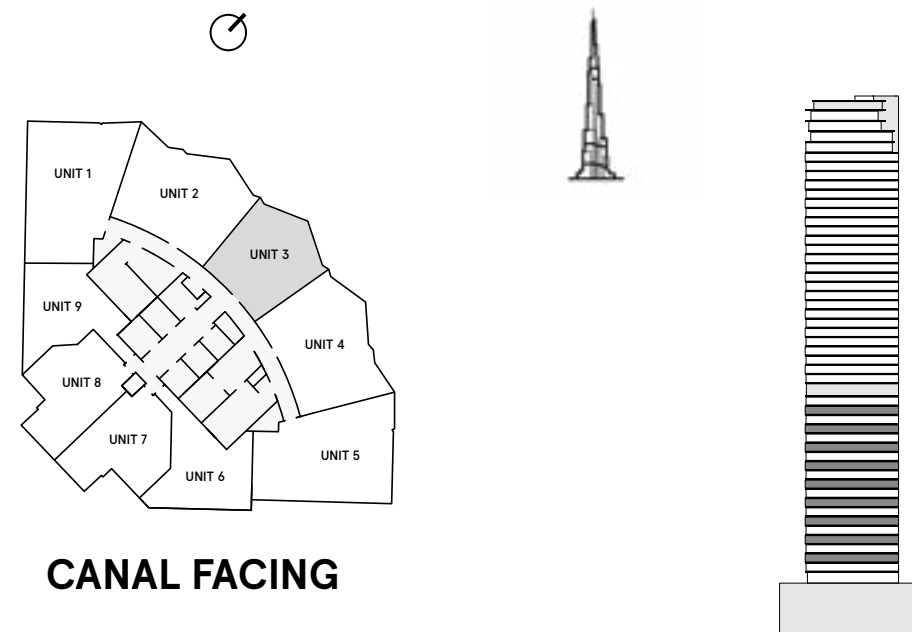


W RESIDENCES DUBAI - DOWNTOWN

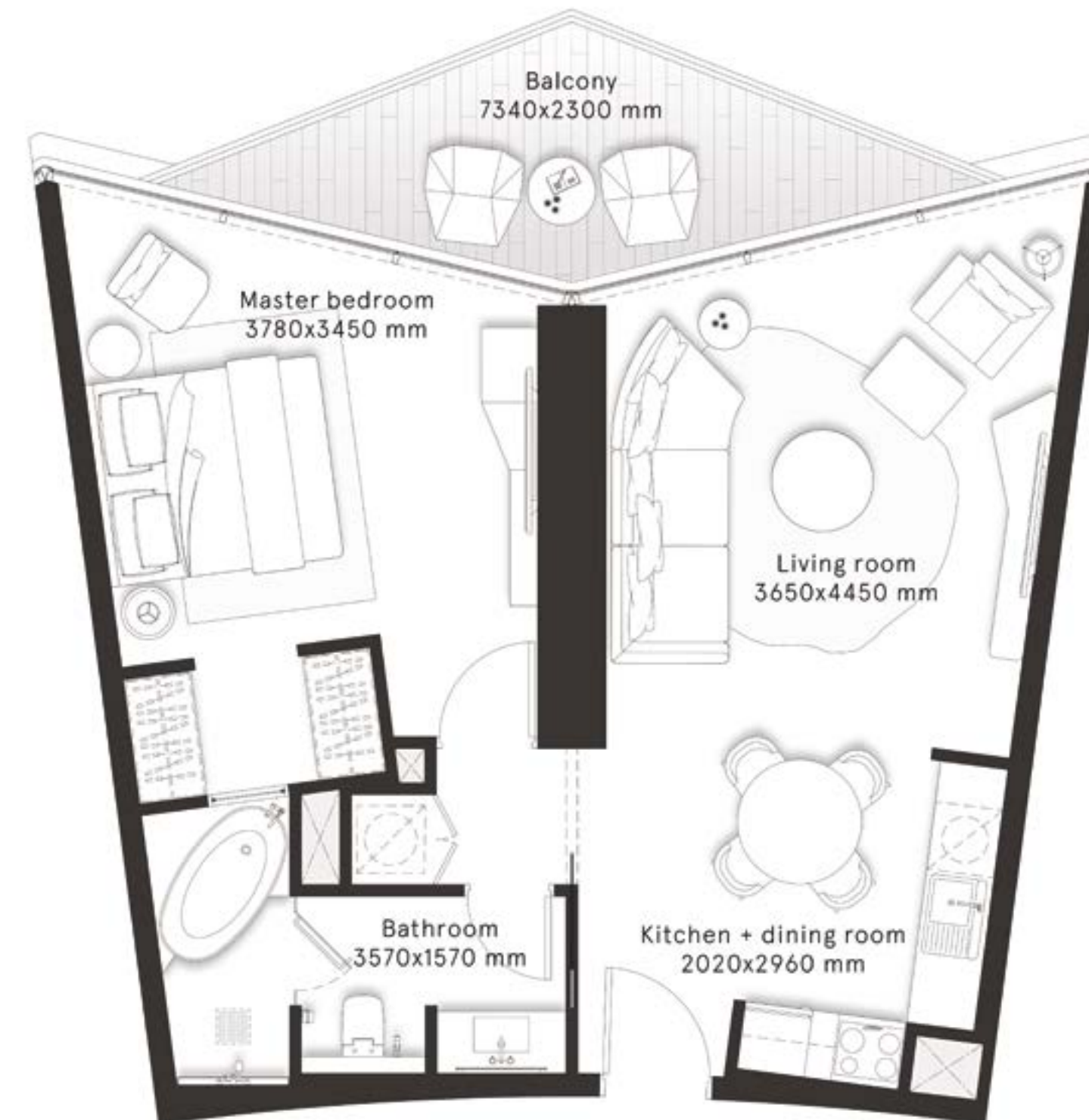
1 Bedroom Type E

FLOORS
3,5,7,9,11,13,15,17,19

CITY
VIEWS



INTERNAL AREA	658.2 sq ft
BALCONY AREA	119.1 sq ft
TOTAL AREA	777.3 sq ft



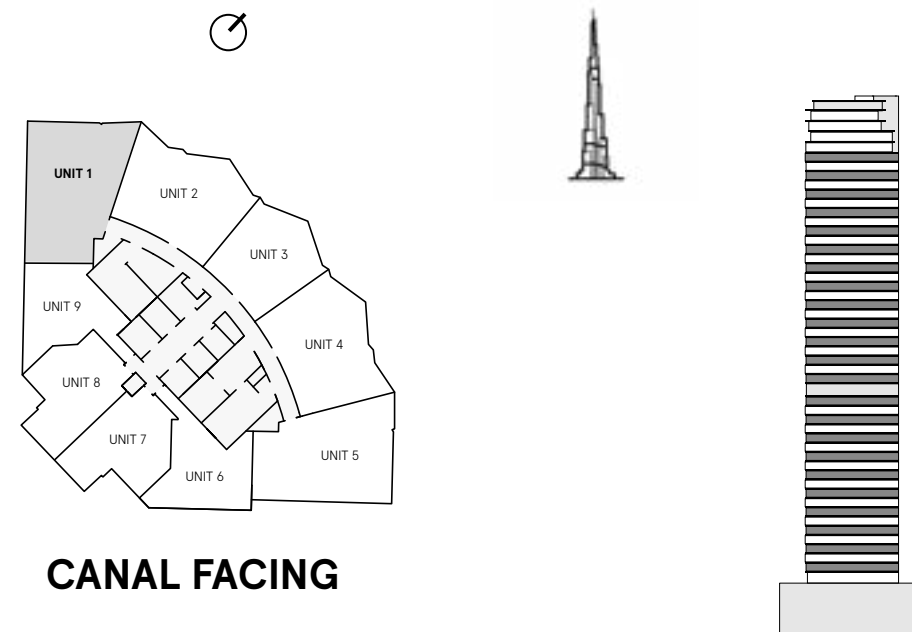
W RESIDENCES DUBAI - DOWNTOWN

2 Bedrooms Type A

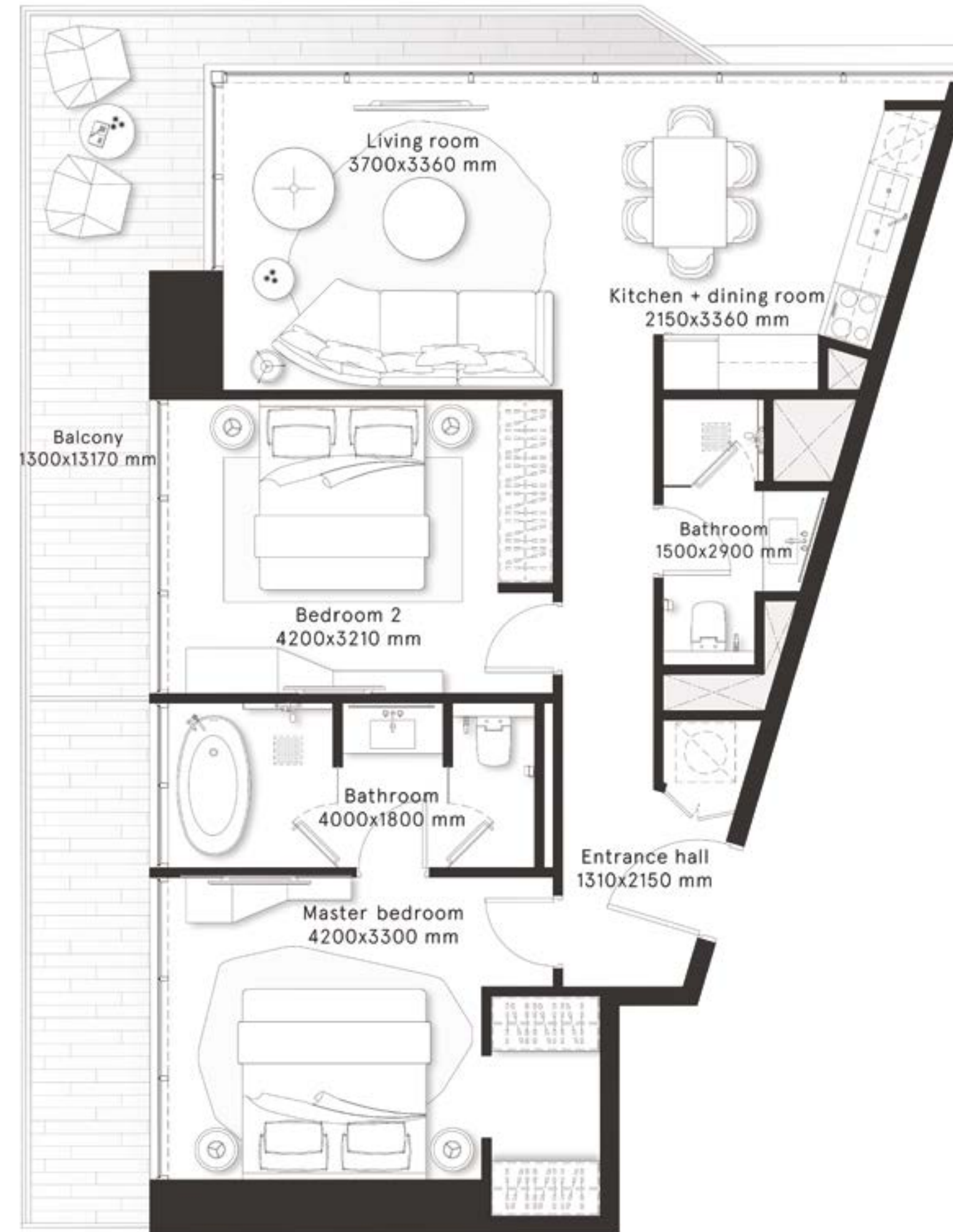
FLOORS

2,4,6,8,10,12,14,16,18,20,22,24,26,
28,30,32,34,36,38,40,42,44,46

CITY VIEWS



INTERNAL AREA	896.8 sq ft
BALCONY AREA	249.6 sq ft
TOTAL AREA	1,146.4 sq ft



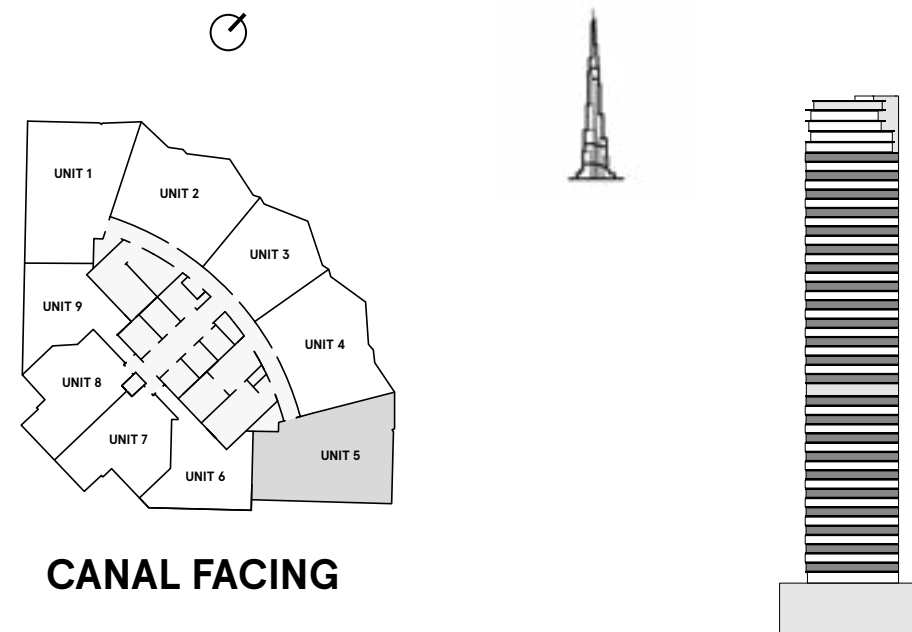
W RESIDENCES DUBAI - DOWNTOWN

2 Bedrooms Type A1

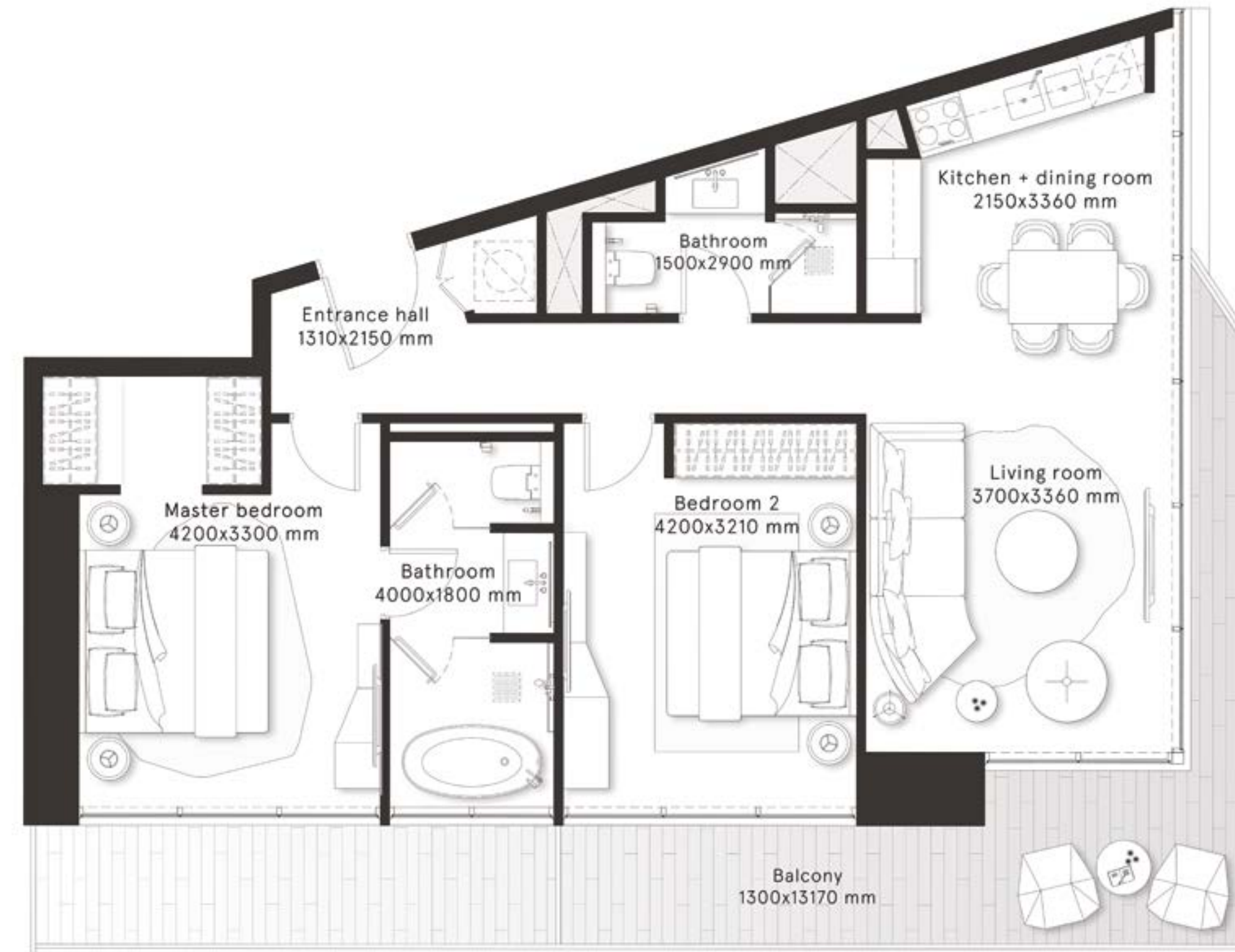
FLOORS

2,4,6,8,10,12,14,16,18,20,22,24,26,
28,30,32,34,36,38,40,42,44,46

CITY VIEWS



INTERNAL AREA	893.8 sq ft
BALCONY AREA	249.9 sq ft
TOTAL AREA	1,143.7 sq ft

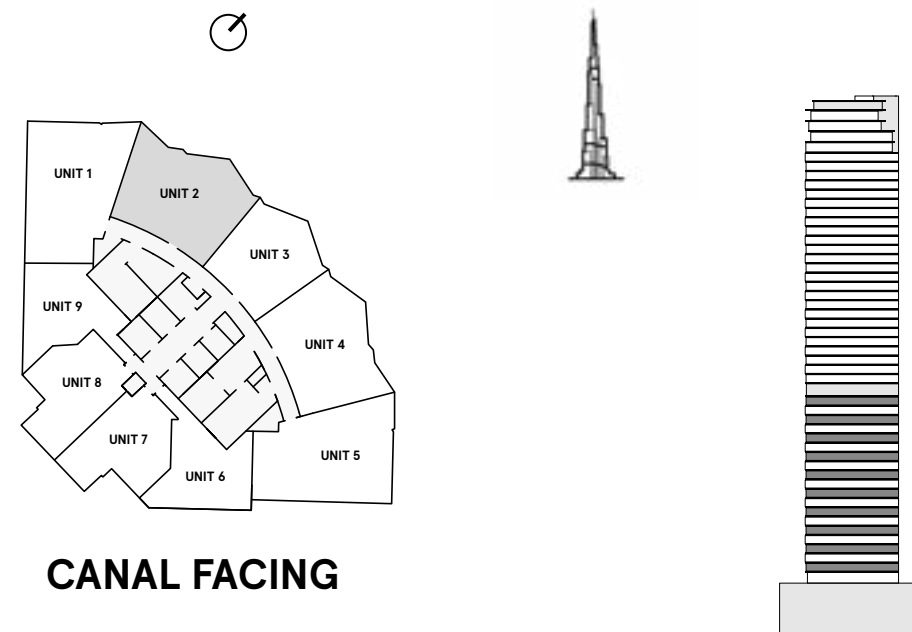


W RESIDENCES DUBAI - DOWNTOWN

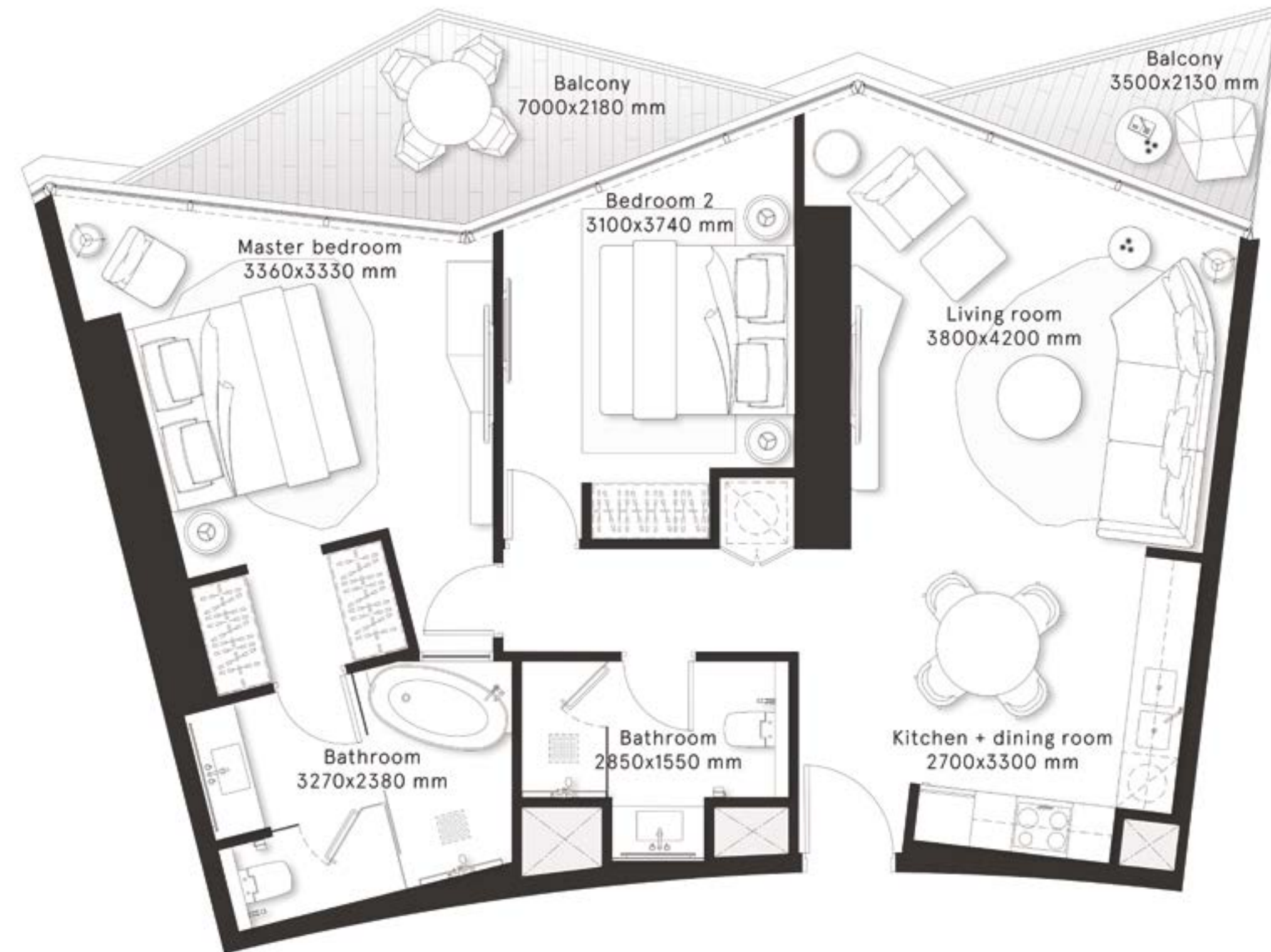
2 Bedrooms Type B

FLOORS
2,4,6,8,10,12,14,16,18,20

CITY
VIEWS



INTERNAL AREA	925.1 sq ft
BALCONY AREA	153.3 sq ft
TOTAL AREA	1,078.4 sq ft

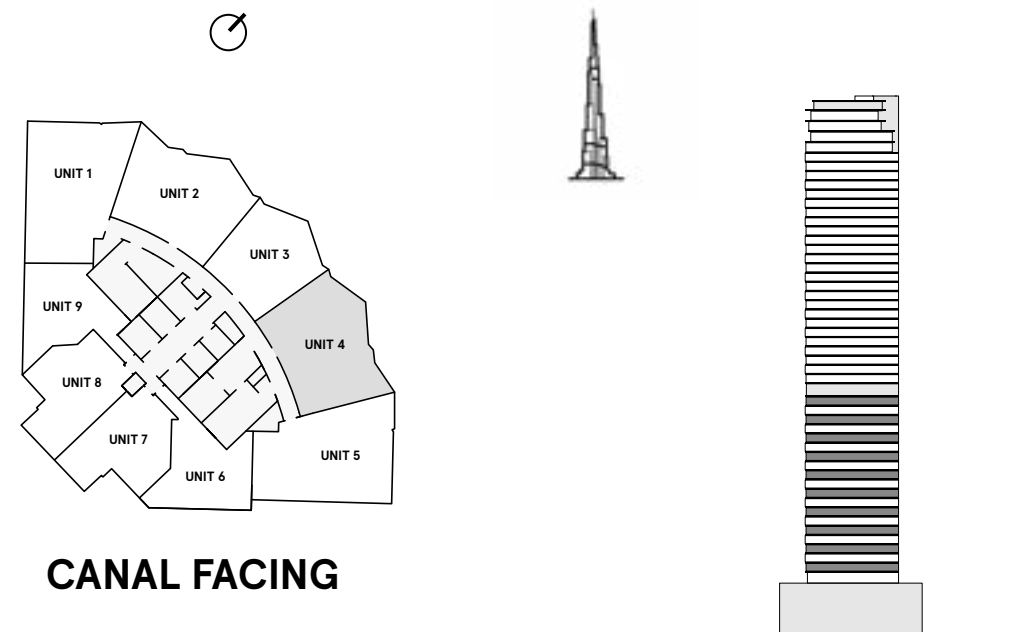


W RESIDENCES DUBAI - DOWNTOWN

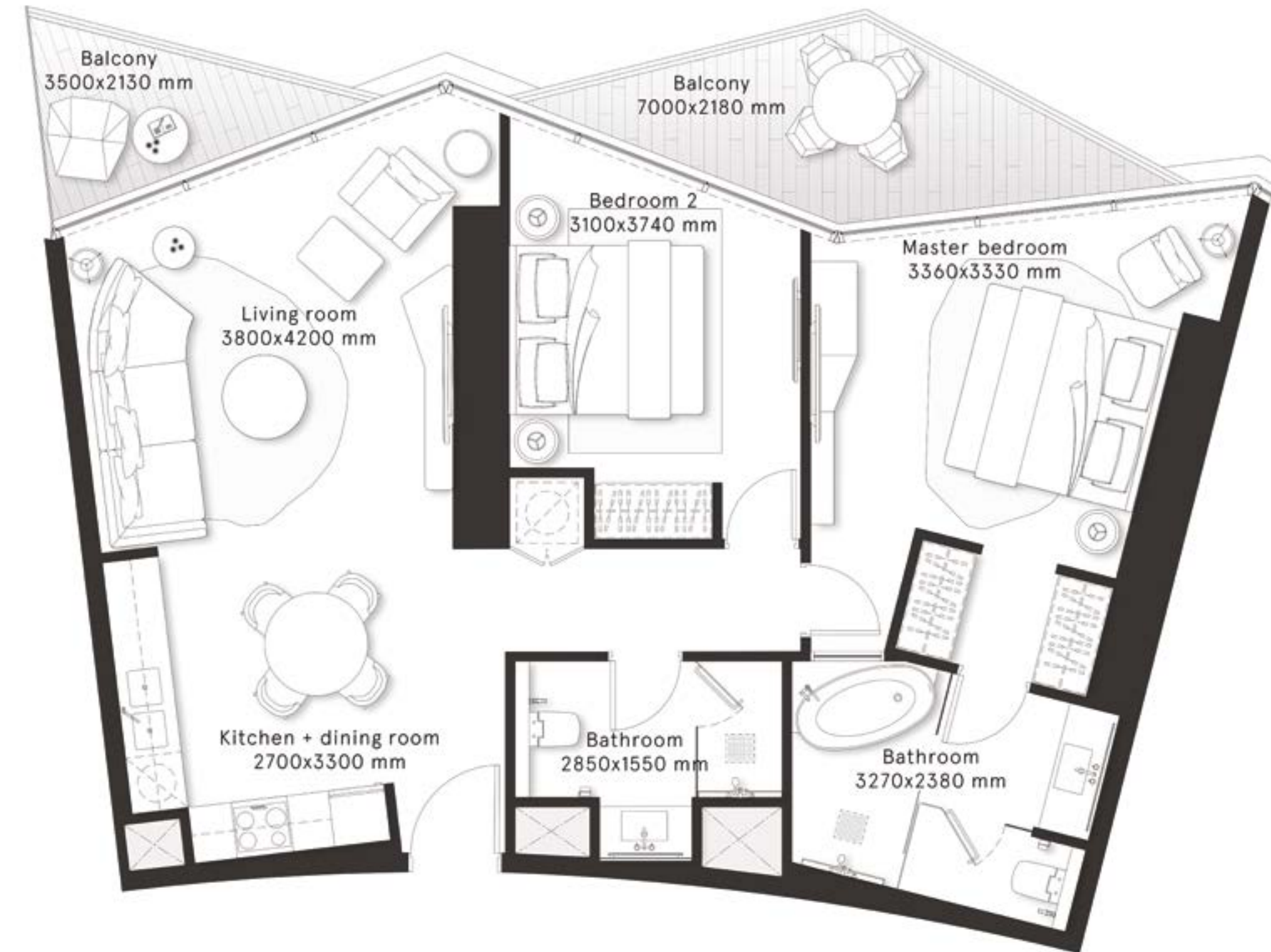
2 Bedrooms Type B1

FLOORS
2,4,6,8,10,12,14,16,18,20

CITY
VIEWS



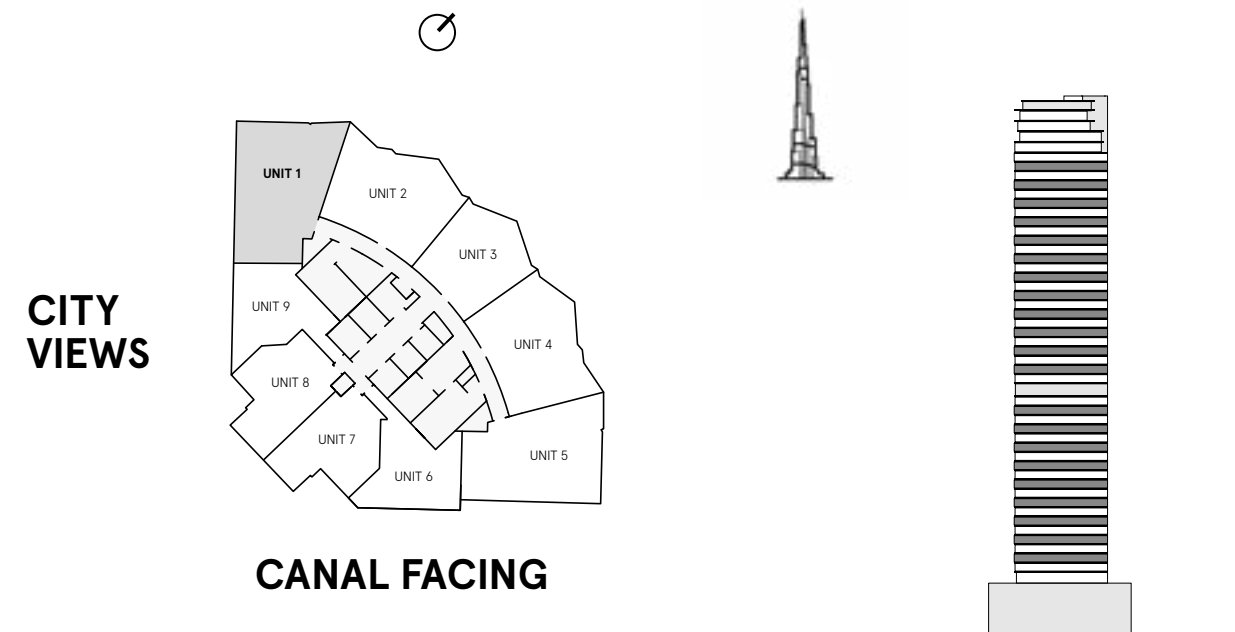
INTERNAL AREA	925.8 sq ft
BALCONY AREA	153.2 sq ft
TOTAL AREA	1,079 sq ft



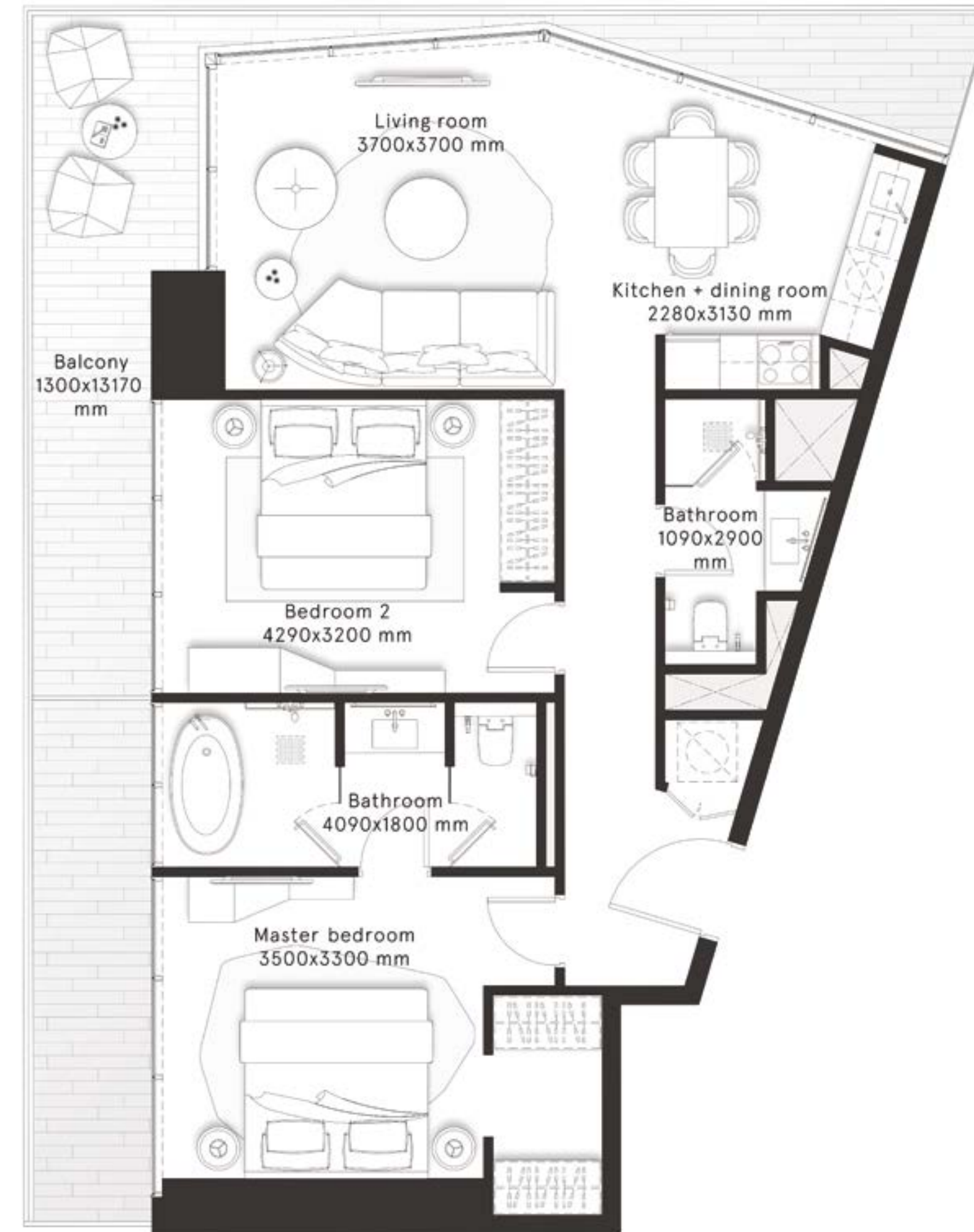
W RESIDENCES DUBAI - DOWNTOWN

2 Bedrooms Type C

FLOORS
3,5,7,9,11,13,15,17,19,23,25,27,
29,31,33,35,37,39,41,43,45



INTERNAL AREA	892.1 sq ft
BALCONY AREA	283.9 sq ft
TOTAL AREA	1,176 sq ft

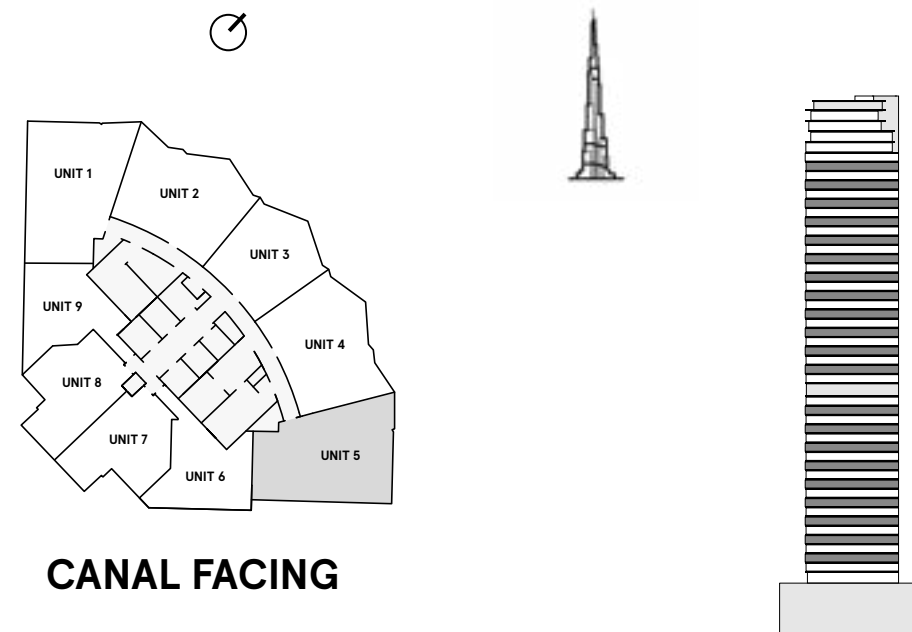


W RESIDENCES DUBAI - DOWNTOWN

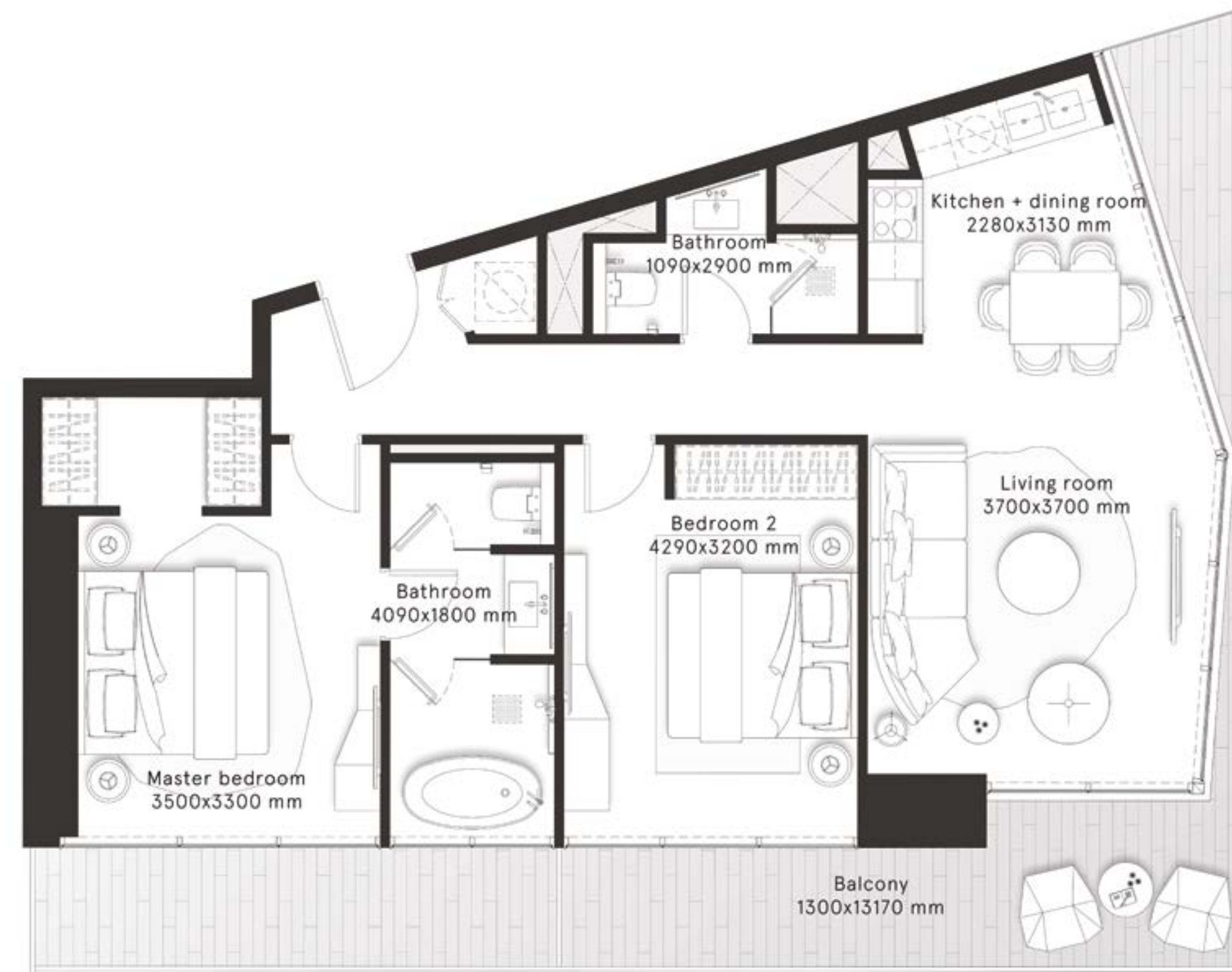
2 Bedrooms Type C1

FLOORS
3,5,7,9,11,13,15,17,19,23,25,27,
29,31,33,35,37,39,41,43,45

CITY
VIEWS



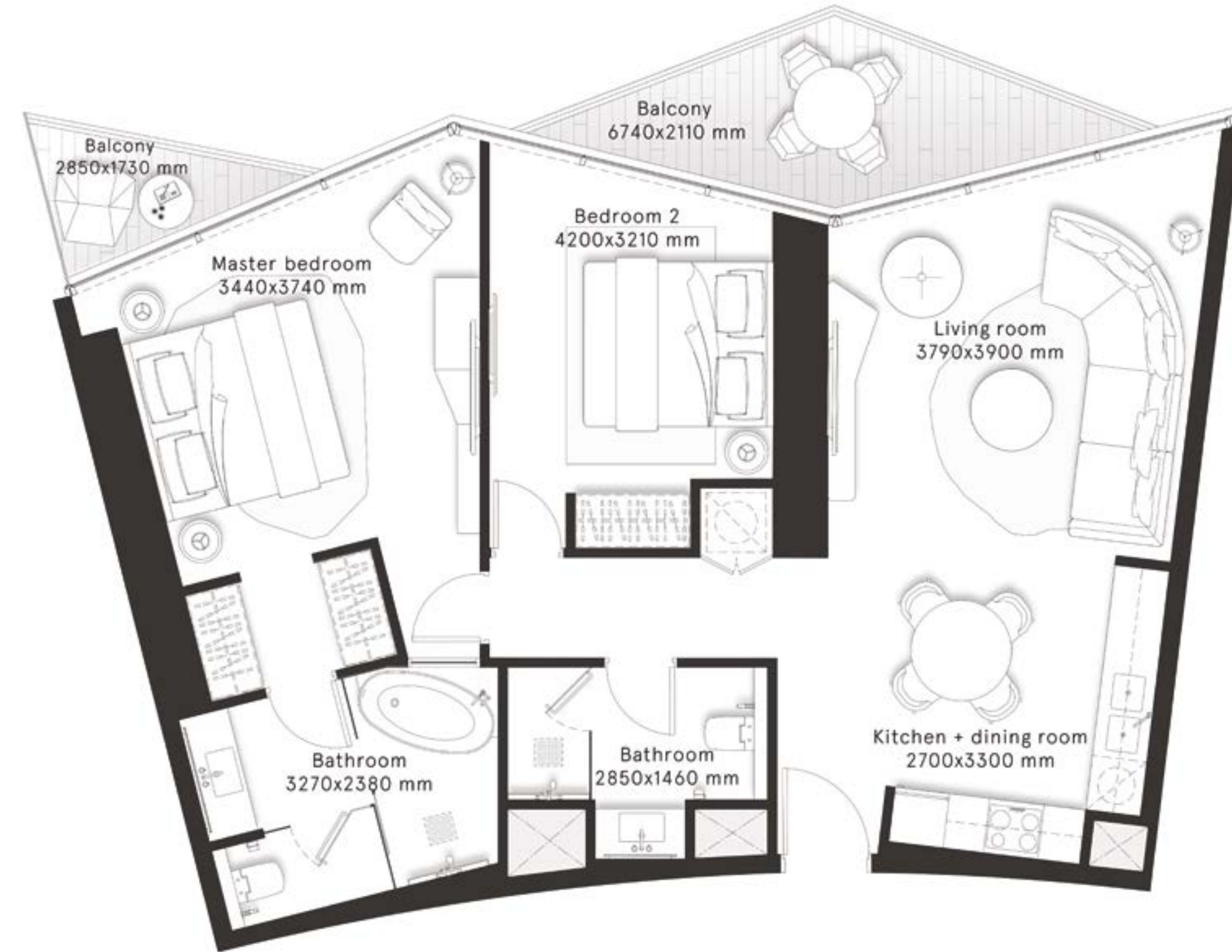
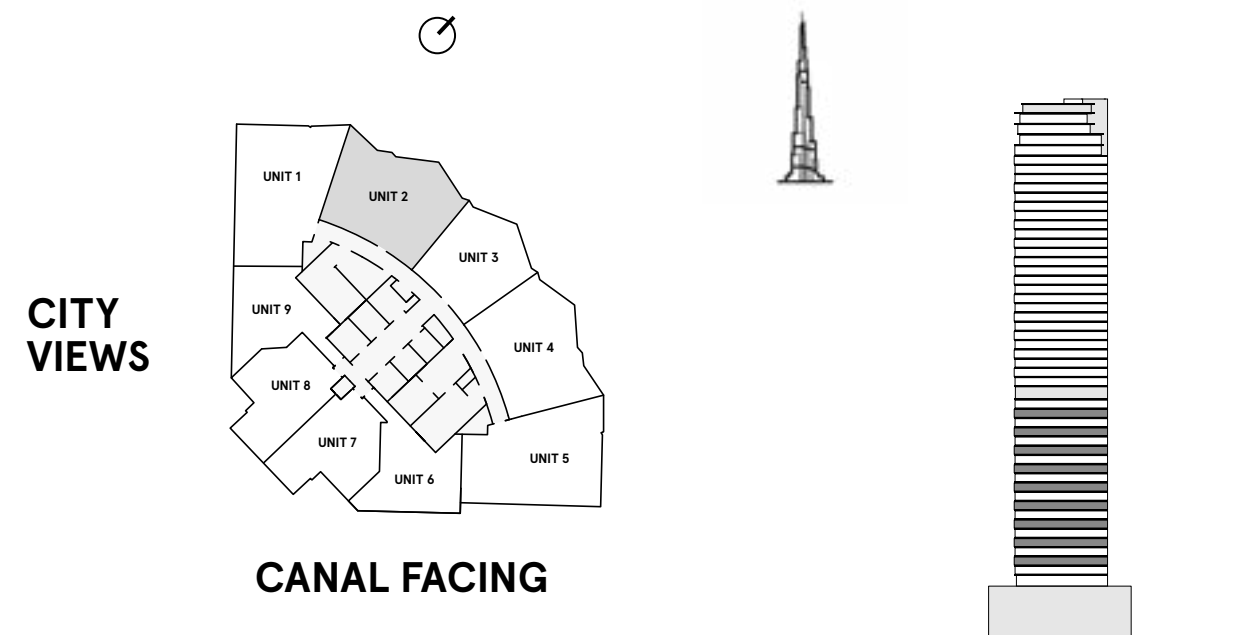
INTERNAL AREA	894 sq ft
BALCONY AREA	273.4 sq ft
TOTAL AREA	1,167.4 sq ft



W RESIDENCES DUBAI - DOWNTOWN

2 Bedrooms Type D

FLOORS
3,5,7,9,11,13,15,17,19

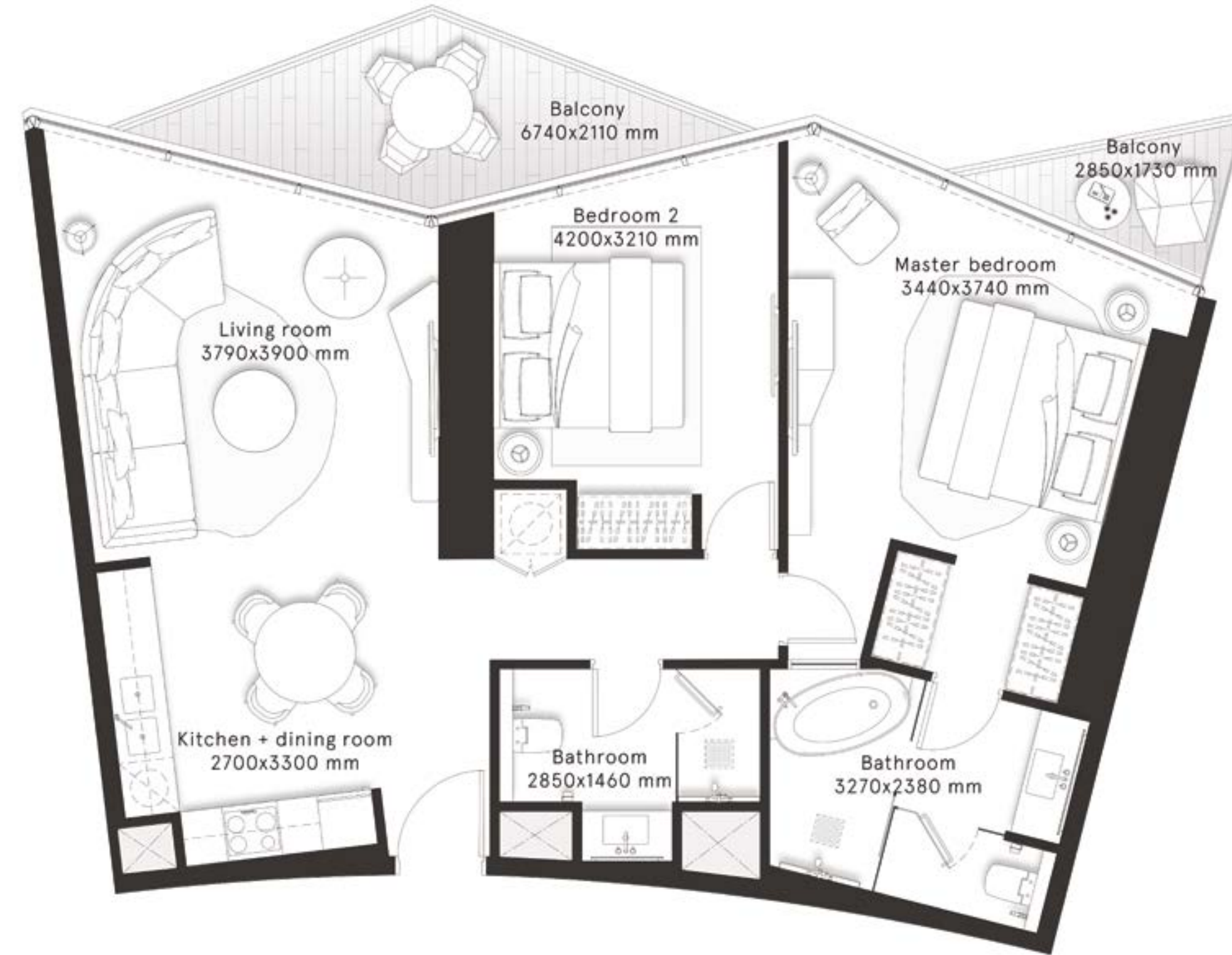
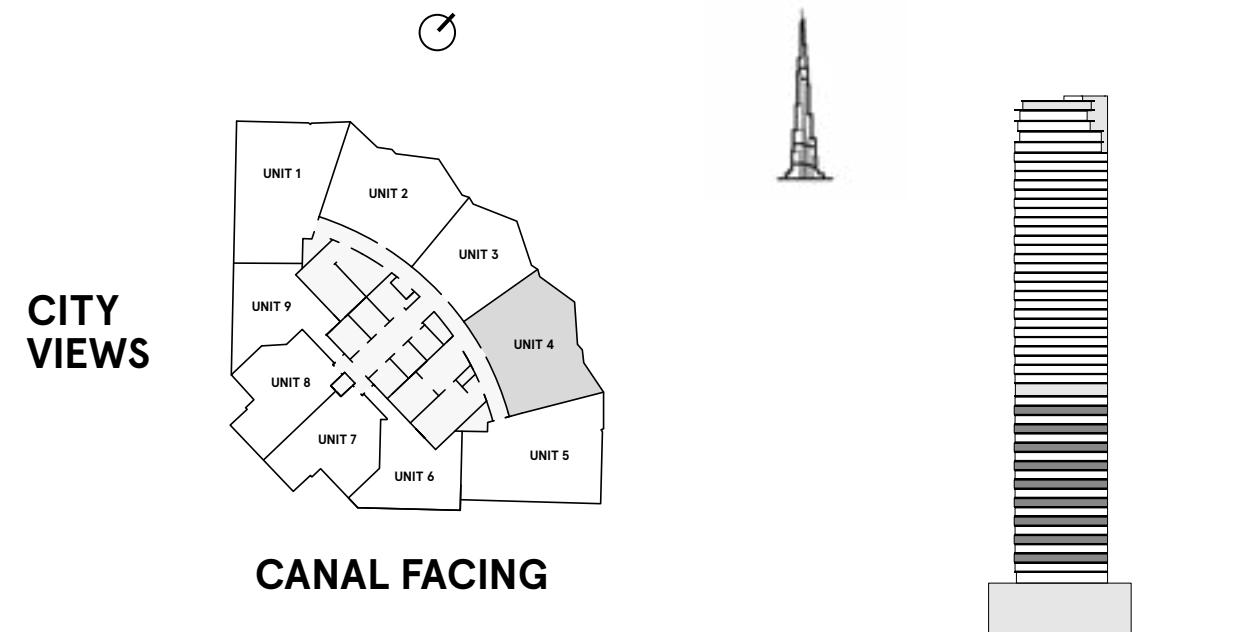


INTERNAL AREA	927 sq ft
BALCONY AREA	135.5 sq ft
TOTAL AREA	1,062.5 sq ft

W RESIDENCES DUBAI - DOWNTOWN

**2 Bedrooms
Type D1**

FLOORS
3,5,7,9,11,13,15,17,19



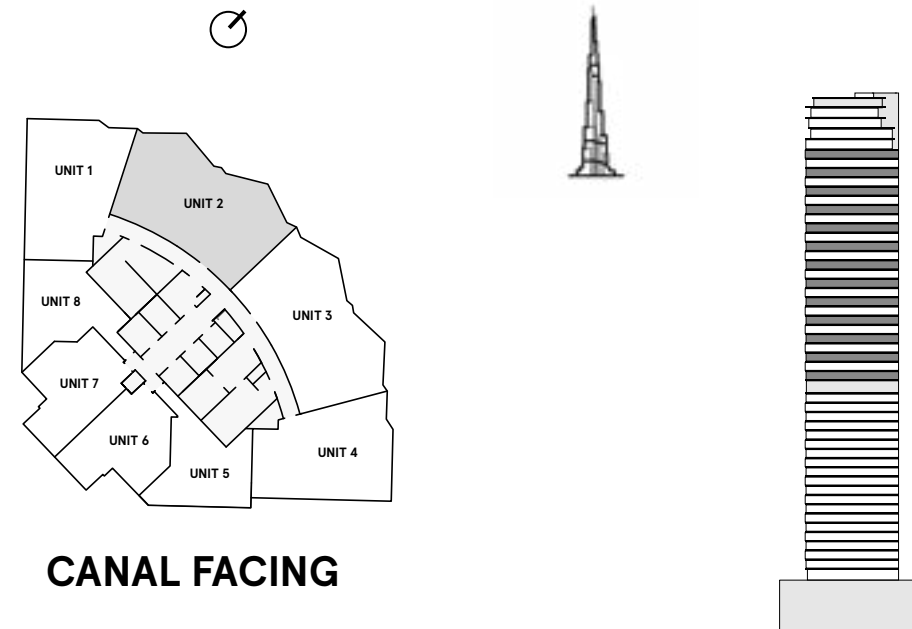
INTERNAL AREA	933.7 sq ft
BALCONY AREA	128.3 sq ft
TOTAL AREA	1,062 sq ft

W RESIDENCES DUBAI - DOWNTOWN

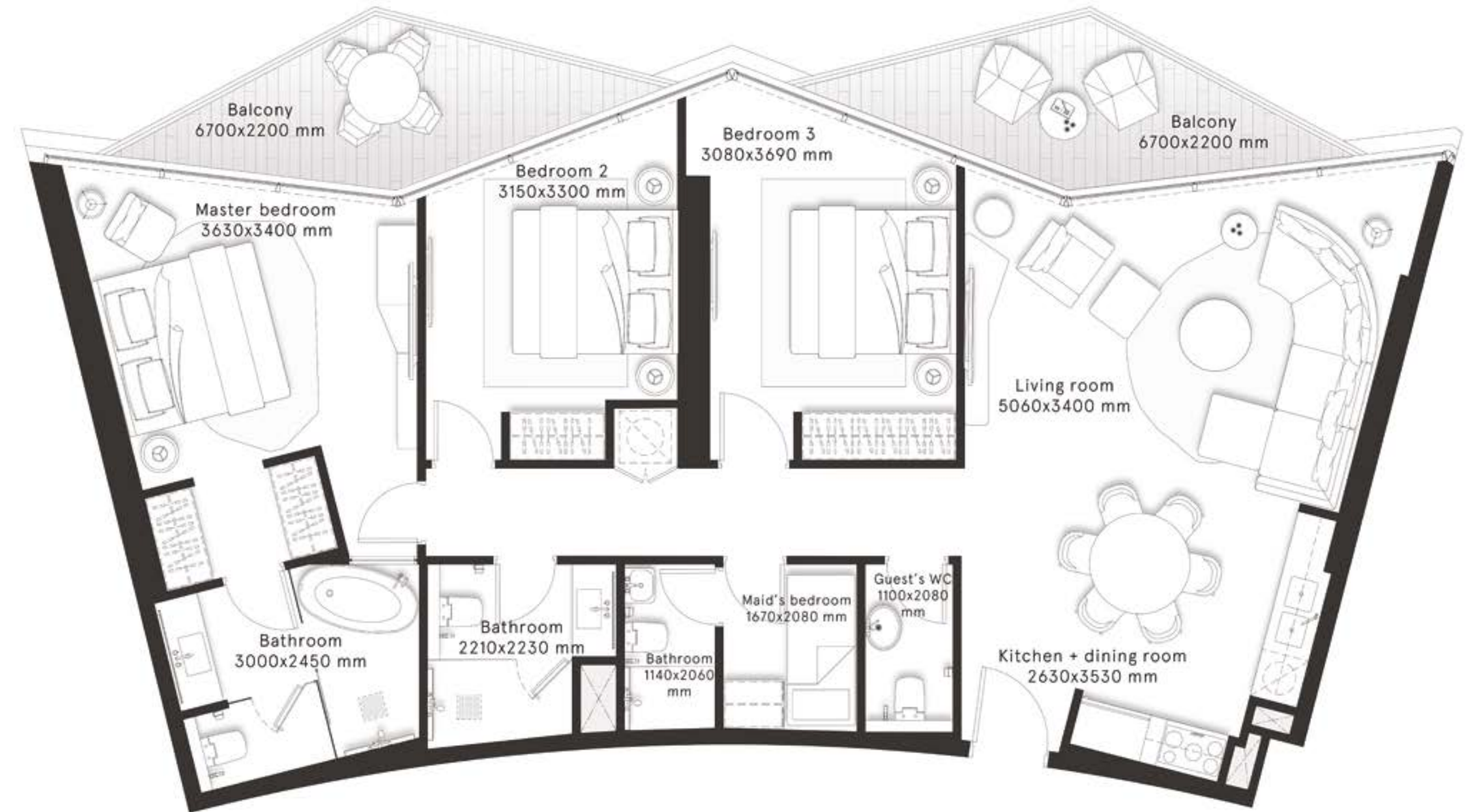
3 Bedrooms Type A

FLOORS
22,24,26,28,30,32,34,
36,38,40,42,44,46

CITY
VIEWS



INTERNAL AREA	1,268.5 sq ft
BALCONY AREA	204.3 sq ft
TOTAL AREA	1,472.8 sq ft

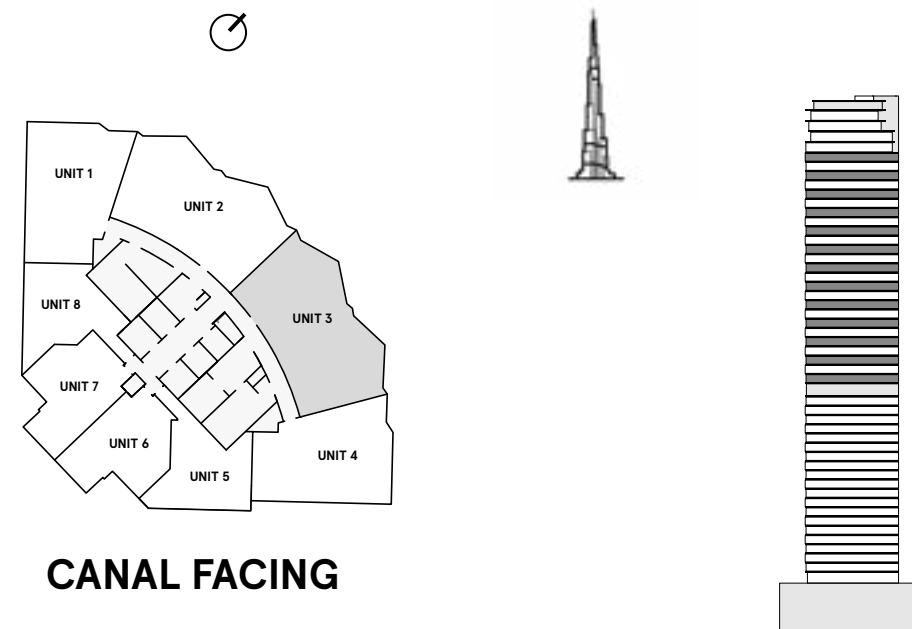


W RESIDENCES DUBAI - DOWNTOWN

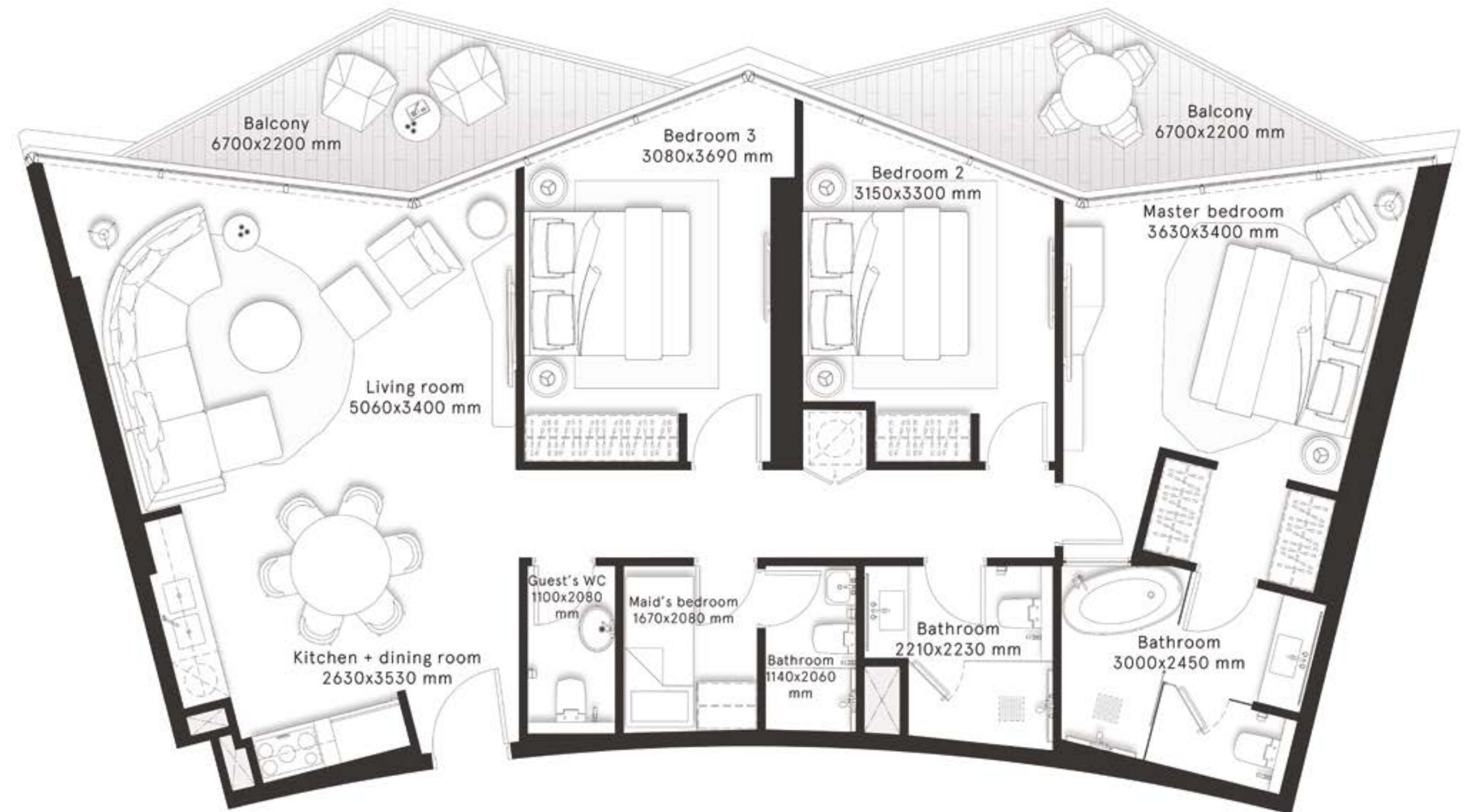
3 Bedrooms Type A1

FLOORS
22,24,26,28,30,32,34,
36,38,40,42,44,46

CITY
VIEWS



INTERNAL AREA	1,266.9 sq ft
BALCONY AREA	204.3 sq ft
TOTAL AREA	1,471.2 sq ft

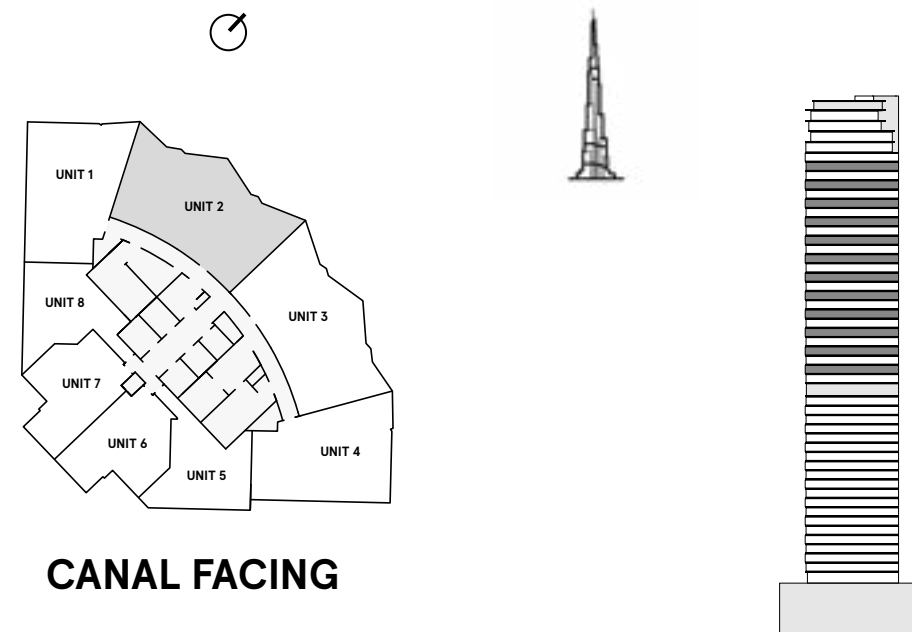


W RESIDENCES DUBAI - DOWNTOWN

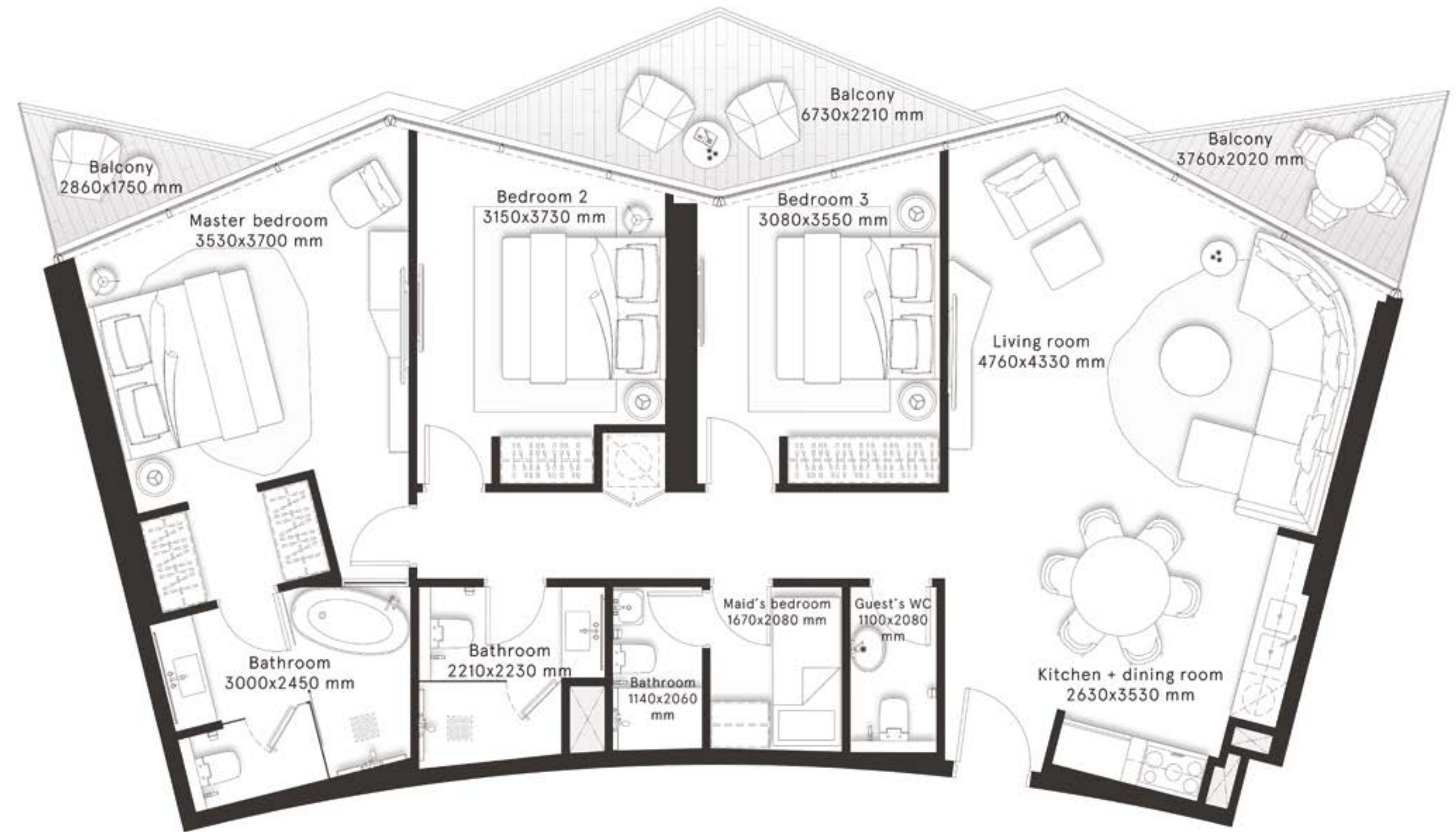
3 Bedrooms Type B

FLOORS
23,25,27,29,31,33,
35,37,39,41,43,45

CITY
VIEWS



INTERNAL AREA	1,268 sq ft
BALCONY AREA	195 sq ft
TOTAL AREA	1,463 sq ft

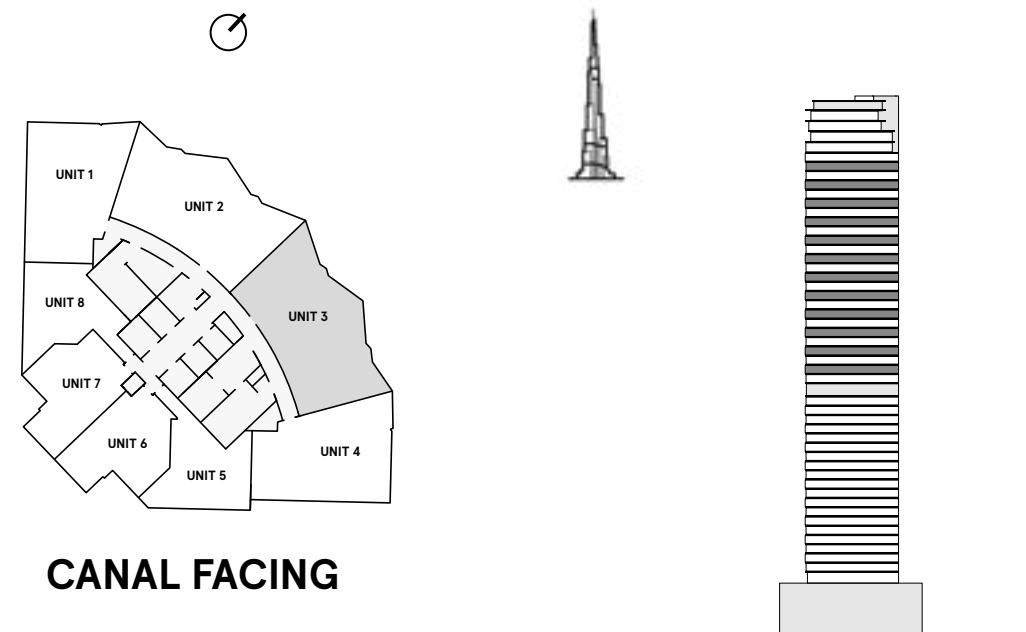


W RESIDENCES DUBAI - DOWNTOWN

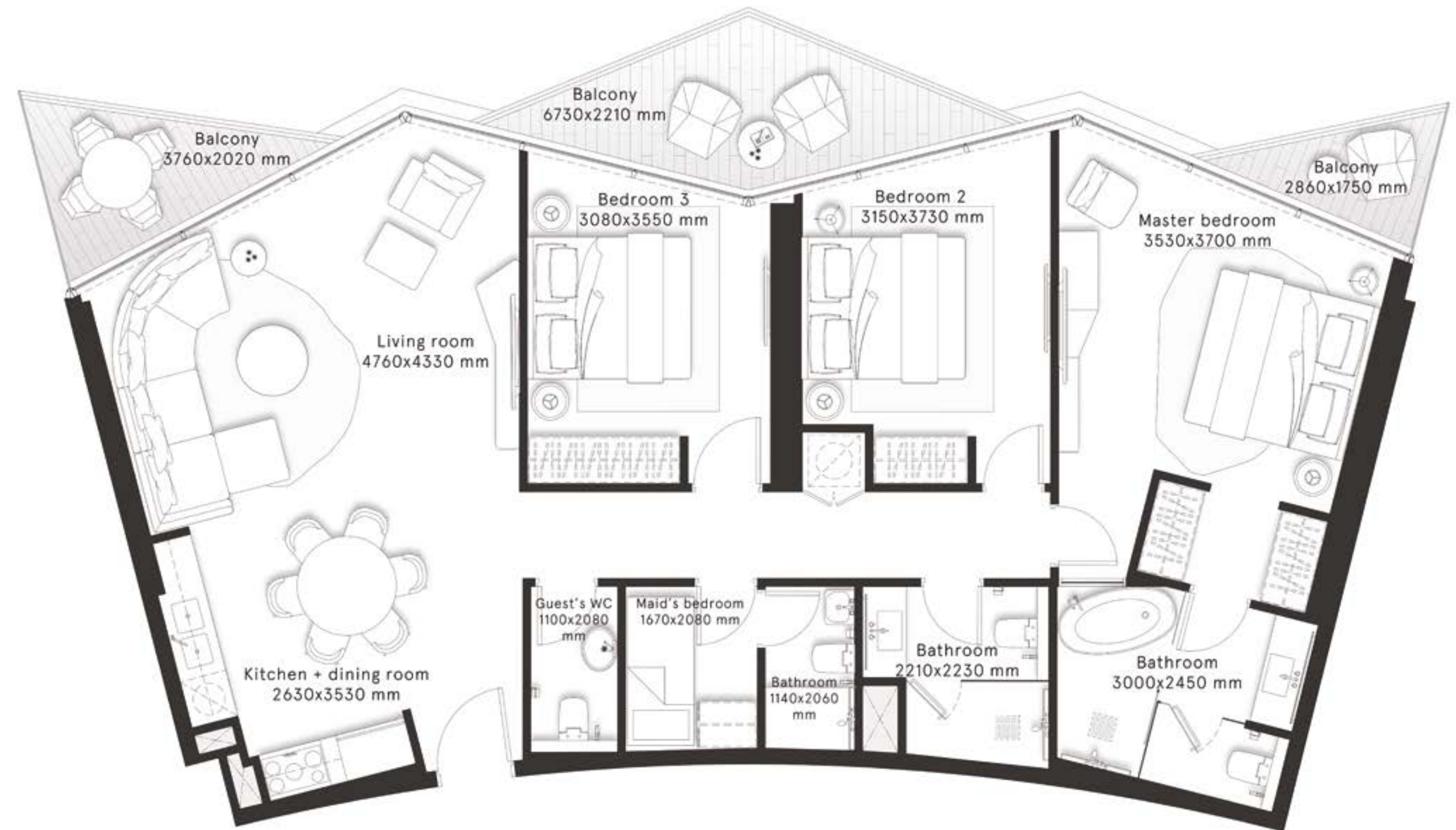
3 Bedrooms Type B1

FLOORS
23,25,27,29,31,33,
35,37,39,41,43,45

CITY
VIEWS



INTERNAL AREA	1,271.2 sq ft
BALCONY AREA	187.8 sq ft
TOTAL AREA	1,459 sq ft



DAR AL ARKAN

RIYADH, KSA

12622 Makkah Road, Al Wizarat, Beside Riyadh Marriott Hotel

BEIJING, CHINA

303-309, North Tower, Beijing Kerry Centre, No.1 Guanghai Road, Chaoyang District, Beijing +86 132 5888 6222

LONDON, UK

50 Hans Crescent, Knightsbridge, London, SW1X ONA

UAE

Dubai
Conrad Dubai, Sheikh Zayed Road, Opposite World Trade Centre, PO Box 2523, Dubai

MARBELLA, SPAIN

Marbella's Golden Mile at Marbella Club Hotel

SARAJEVO, BiH

Ul. Fra Andela, Zvizdovica Br. 1, D-mezanin, 71 000

RIYADH, KSA

Shams Ar Riyadh, 13913 Salbukh Road

MEDINA, KSA

Prince Sultan Road – Al Hijra, Al Madinah Al Munawarah, Medina.

RIYADH, KSA

Al Aflaj, As Suwaidi, 12796, Riyadh

JEDDAH, KSA

Ash Shati, 23613, King Abdulaziz Road, Jeddah

For more information on "W Residences Dubai - Downtown" please call [+971 800 40404](tel:+97180040404) (UAE) or [800 123 3333](tel:8001233333) (KSA)

You can visit our website at daralarkan.com

or email us at info@alarkan.com or via our social media platforms

DarAlArkanOfficial /  | [daralarkanGLBL](https://www.daralarkan.com) /  | [daralarkan](https://www.daralarkan.com) /  | [daralarkanproperties](https://www.daralarkan.com) / 